

Service Manual

A32

Issue 1.0

FMJ A32, P35 & P35/3 Amplifiers



ARCAM

Contents List

- **Phono board L870**
 - Circuit description
 - Component overlay
 - Parts list
 - Circuit diagrams

- **Amplifier & PSU board L882**
 - Circuit description
 - Component overlay
 - Parts list
 - Circuit diagrams

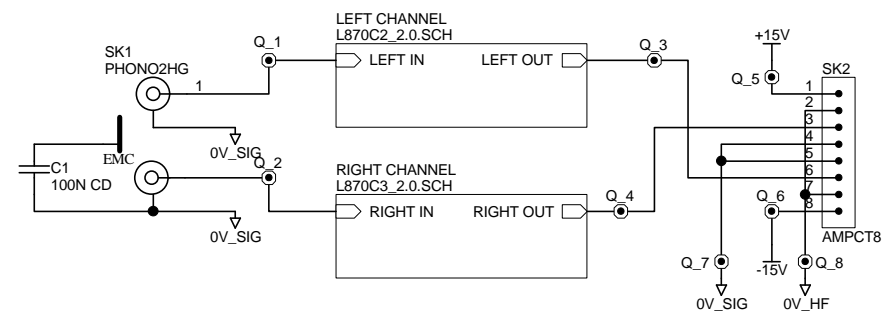
- **Display board L928**
 - Component overlay
 - Parts list
 - Circuit diagrams

- **Preamplifier board L937**
 - Circuit description
 - Component overlay
 - Parts list
 - Circuit diagrams

- **3rd Channel Amplifier board L911**
 - Component overlay
 - Parts list
 - Circuit diagrams

- **Transformer specifications**
 - L914TX
 - L915TX

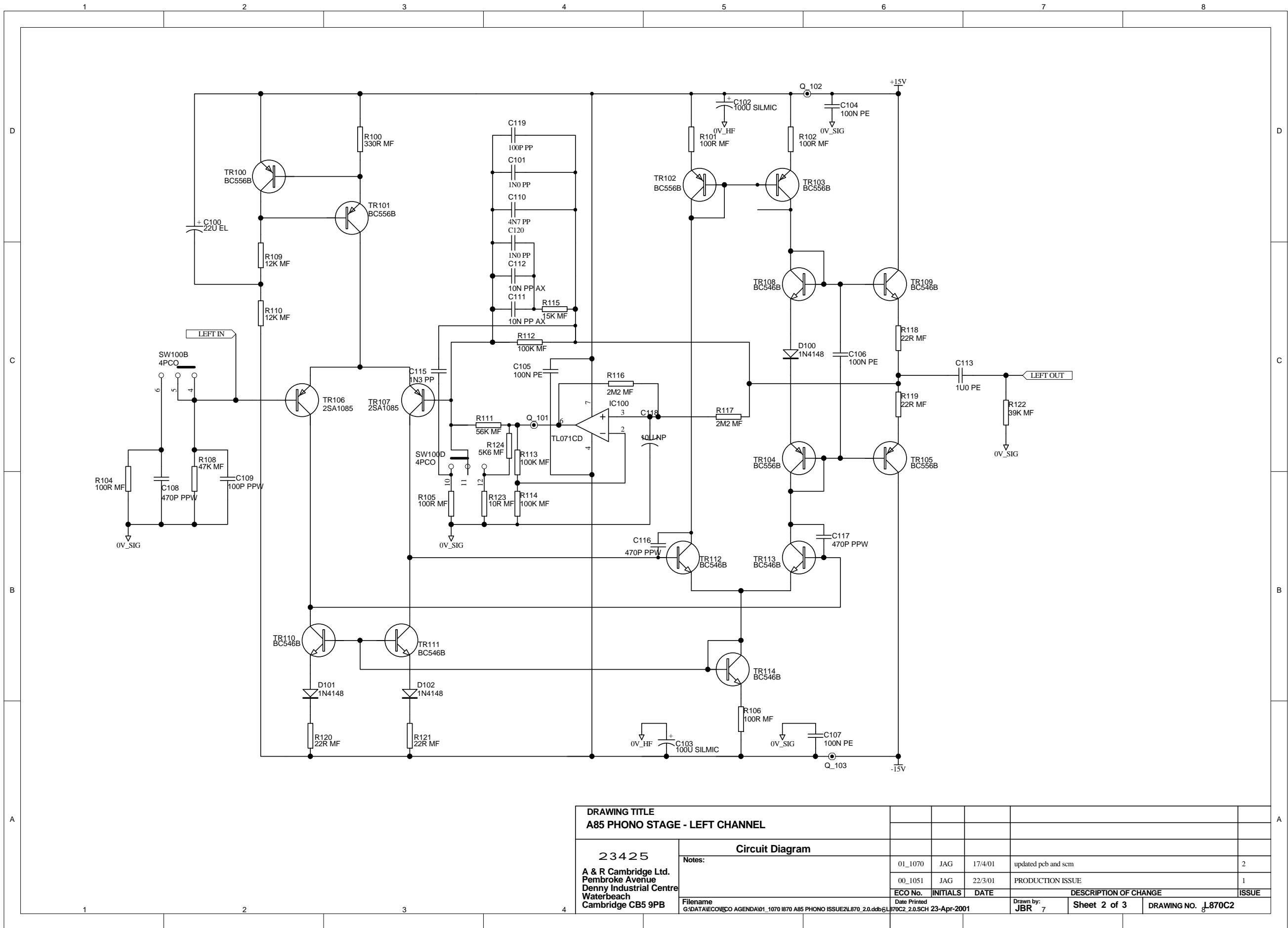
- **General assembly**
 - A32 - Mechanical parts list
 - P35 - Mechanical parts list
 - P35/3 - Mechanical parts list



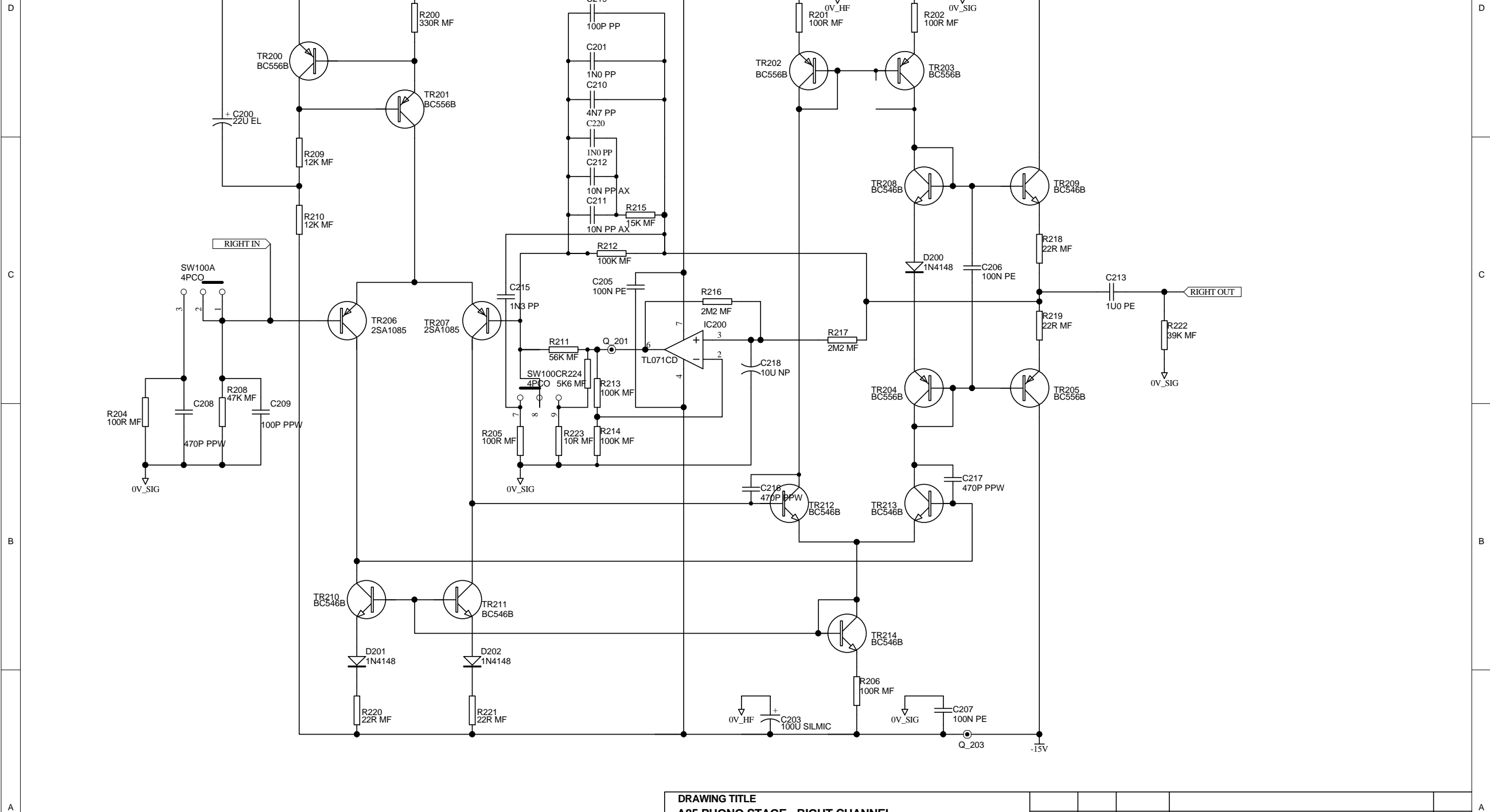
PCB1
PCB
 L870PB_2

EL1
 Update Box
 UPDATE_BOX

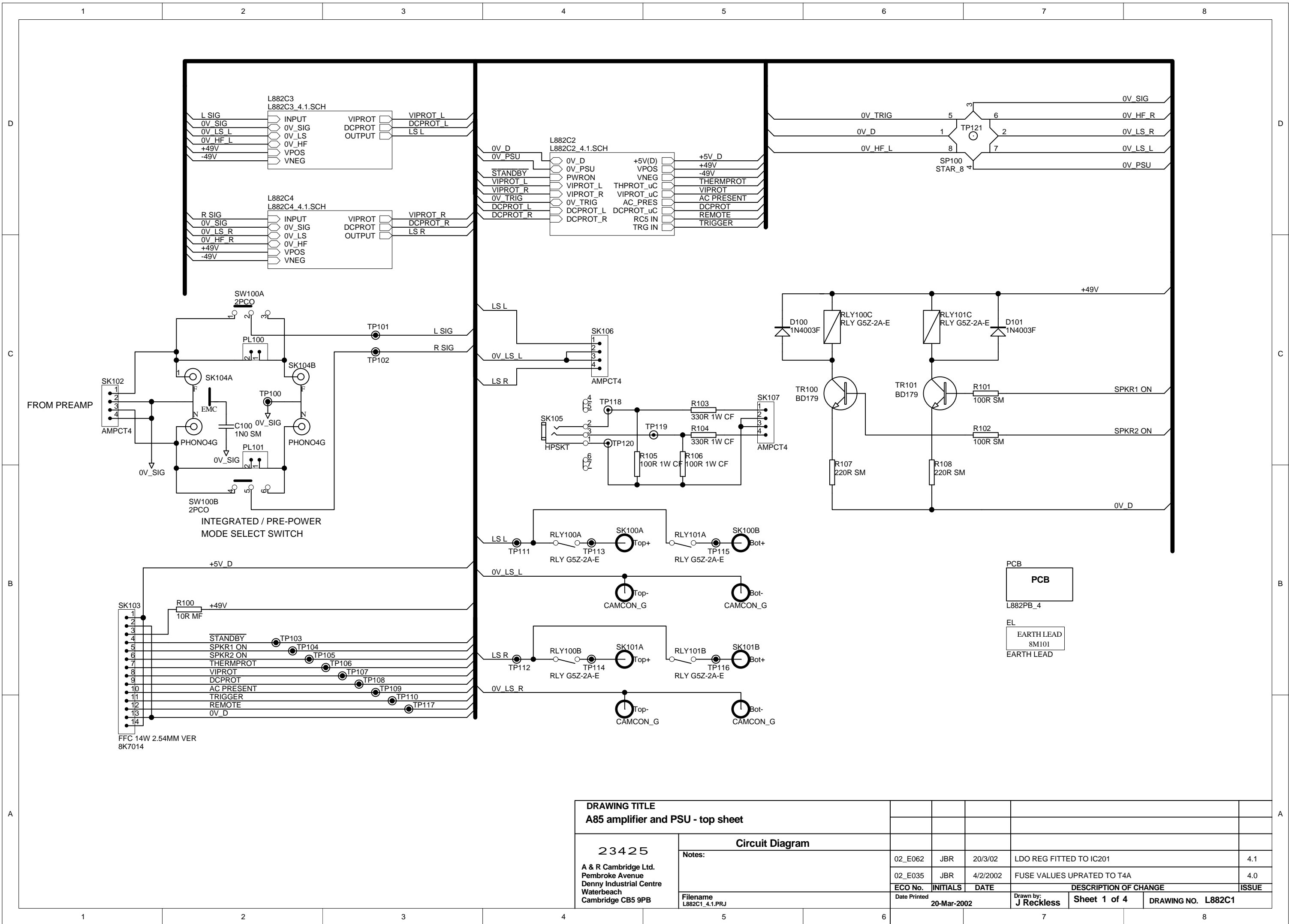
DRAWING TITLE A85 PHONO STAGE - TOP LEVEL										
23425 A & R Cambridge Ltd. Pembroke Avenue Denny Industrial Centre Waterbeach Cambridge CB5 9PB						Circuit Diagram				
Notes:						01_1070	JAG	17/4/01	updated pcb and scm	2
Filename G:\DATA\ECO\ECO AGENDA\01_1070\870 A85 PHONO ISSUE2\L870 2.0.ddb - L870c1 2.0.PRJ						00_1051	JAG	22/3/01	PRODUCTION ISSUE	1
Date Printed 23-Apr-2001						ECO No.	INITIALS	DATE	DESCRIPTION OF CHANGE	ISSUE
Date Drawn 23-Apr-2001						Drawn by: JBR	Sheet 1 of 3		DRAWING NO. L870C1	



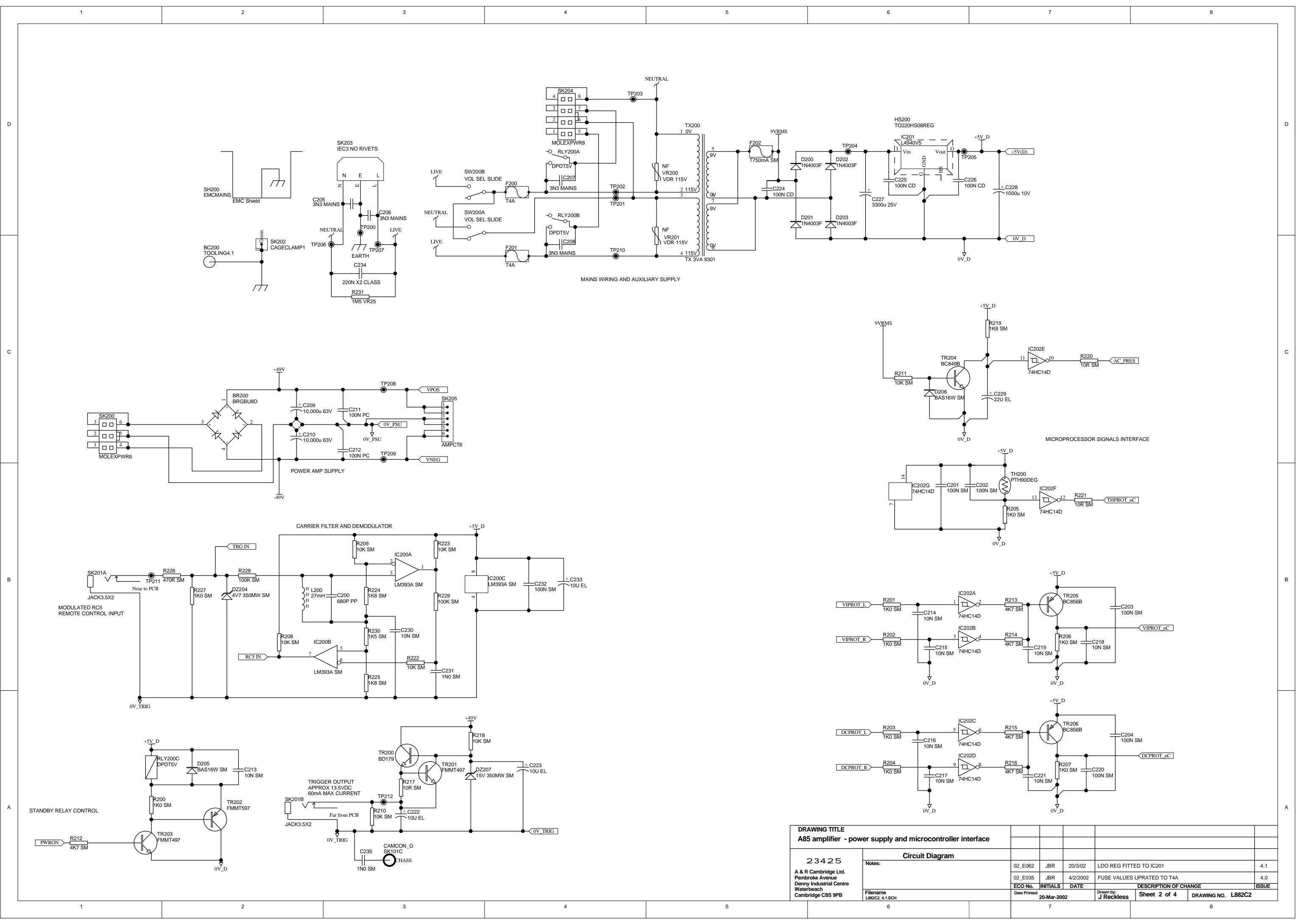
DRAWING TITLE						
A85 PHONO STAGE - LEFT CHANNEL						
23425		Circuit Diagram				
A & R Cambridge Ltd. Pembroke Avenue Denny Industrial Centre Waterbeach Cambridge CB5 9PB		Notes:				
Filename G:\DATA\ECO\ECO AGENDA\01_1070\870 A85 PHONO ISSUE2\870 2.0.ddb		01_1070	JAG	17/4/01	updated pcb and scm	2
Date Printed 17/02/2001 10:23:23		00_1051	JAG	22/3/01	PRODUCTION ISSUE	1
Date Drawn 17/02/2001 10:23:23		ECO No.	INITIALS	DATE	DESCRIPTION OF CHANGE	ISSUE
Date Printed 17/02/2001 10:23:23		Date Drawn 17/02/2001 10:23:23		Drawn by: JBR 7		Sheet 2 of 3
Date Printed 17/02/2001 10:23:23		Date Drawn 17/02/2001 10:23:23		Drawn by: JBR 7		DRAWING NO. L870C2



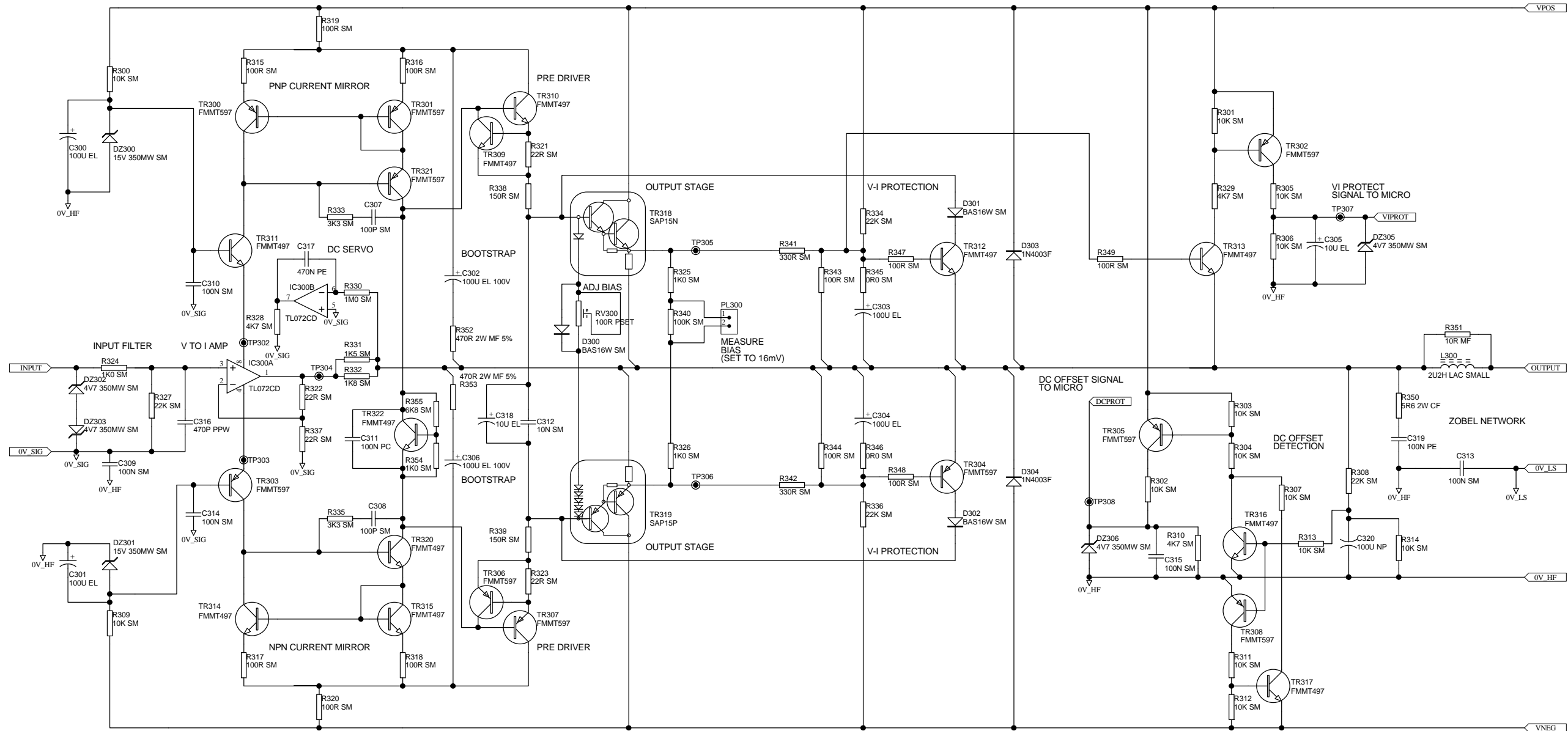
DRAWING TITLE							
A85 PHONO STAGE - RIGHT CHANNEL							
23425		Circuit Diagram					
A & R Cambridge Ltd. Pembroke Avenue Denny Industrial Centre Waterbeach Cambridge CB5 9PB		Notes:		01_1070 JAG 17/4/01 updated pcb and scm		2	
Filename G:\DATA\ECO\ECO AGENDA\01_1070\870 A85 PHONO ISSUE2\870_2.0.ddb		Date Printed 23-Apr-2001		00_1051 JAG 22/3/01 PRODUCTION ISSUE		1	
Date Printed 23-Apr-2001		Date Printed 23-Apr-2001		ECO No.		INITIALS	
Date Printed 23-Apr-2001		Date Printed 23-Apr-2001		DATE		DESCRIPTION OF CHANGE	
Date Printed 23-Apr-2001		Date Printed 23-Apr-2001		Drawn by: JBR		Sheet 3 of 3	
Date Printed 23-Apr-2001		Date Printed 23-Apr-2001		Date Printed 23-Apr-2001		DRAWING NO. L870C3	
Date Printed 23-Apr-2001		Date Printed 23-Apr-2001		Date Printed 23-Apr-2001		Date Printed 23-Apr-2001	



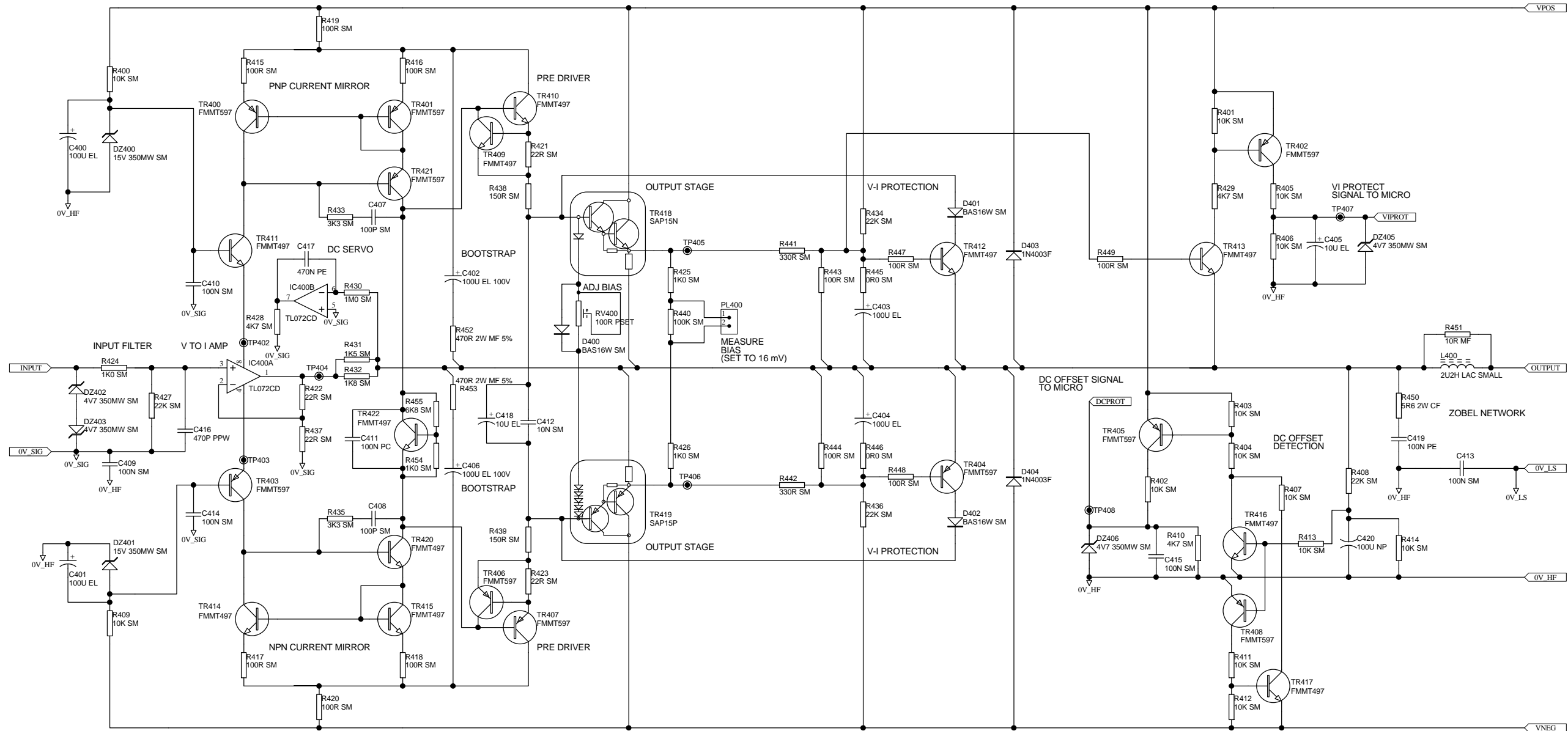
DRAWING TITLE					
A85 amplifier and PSU - top sheet					
23425		Circuit Diagram			
A & R Cambridge Ltd. Pembroke Avenue Denny Industrial Centre Waterbeach Cambridge CB5 9PB		Notes:			
Filename L882C1_4.1.PRJ		02_E062	JBR	20/3/02	LDO REG FITTED TO IC201
Date Printed 20-Mar-2002		02_E035	JBR	4/2/2002	FUSE VALUES UPDATED TO T4A
Date Printed 20-Mar-2002		ECO No.	INITIALS	DATE	DESCRIPTION OF CHANGE
Date Printed 20-Mar-2002					ISSUE
Date Printed 20-Mar-2002		Drawn by: J Reckless	Sheet 1 of 4		DRAWING NO. L882C1



DRAWING TITLE					
A85 amplifier - power supply and microcontroller interface					
23425					
A & R Cambridge Ltd. Pembroke Avenue Denny Industrial Centre Waterbeach Cambridge CB5 9PB					
Circuit Diagram					
Notes:	02_E062	JBR	20/3/02	LDO REG FITTED TO IC201	4.1
	02_E035	JBR	4/2/2002	FUSE VALUES UPDATED TO T4A	4.0
Filename	L882C2_4.1.SCH				
Date Printed	20-Mar-2002				
Drawn by:	J Reckless				
Sheet	2 of 4			DRAWING NO. L882C2	ISSUE



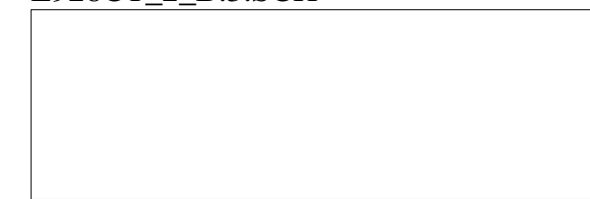
DRAWING TITLE					
A85 amplifier - power output stage left					
23425					
A & R Cambridge Ltd. Pembroke Avenue Denny Industrial Centre Waterbeach Cambridge CB5 9PB					
Circuit Diagram					
Notes:	02_E062	JBR	20/3/02	LDO REG FITTED TO IC201	4.1
	02_E035	JBR	4/2/2002	FUSE VALUES UPDATED TO T4A	4.0
Filename	L882C3	4.1.SCH	Date Printed	20-Mar-2002	Drawn by: J Reckless
				Sheet 3 of 4	DRAWING NO. L882C3



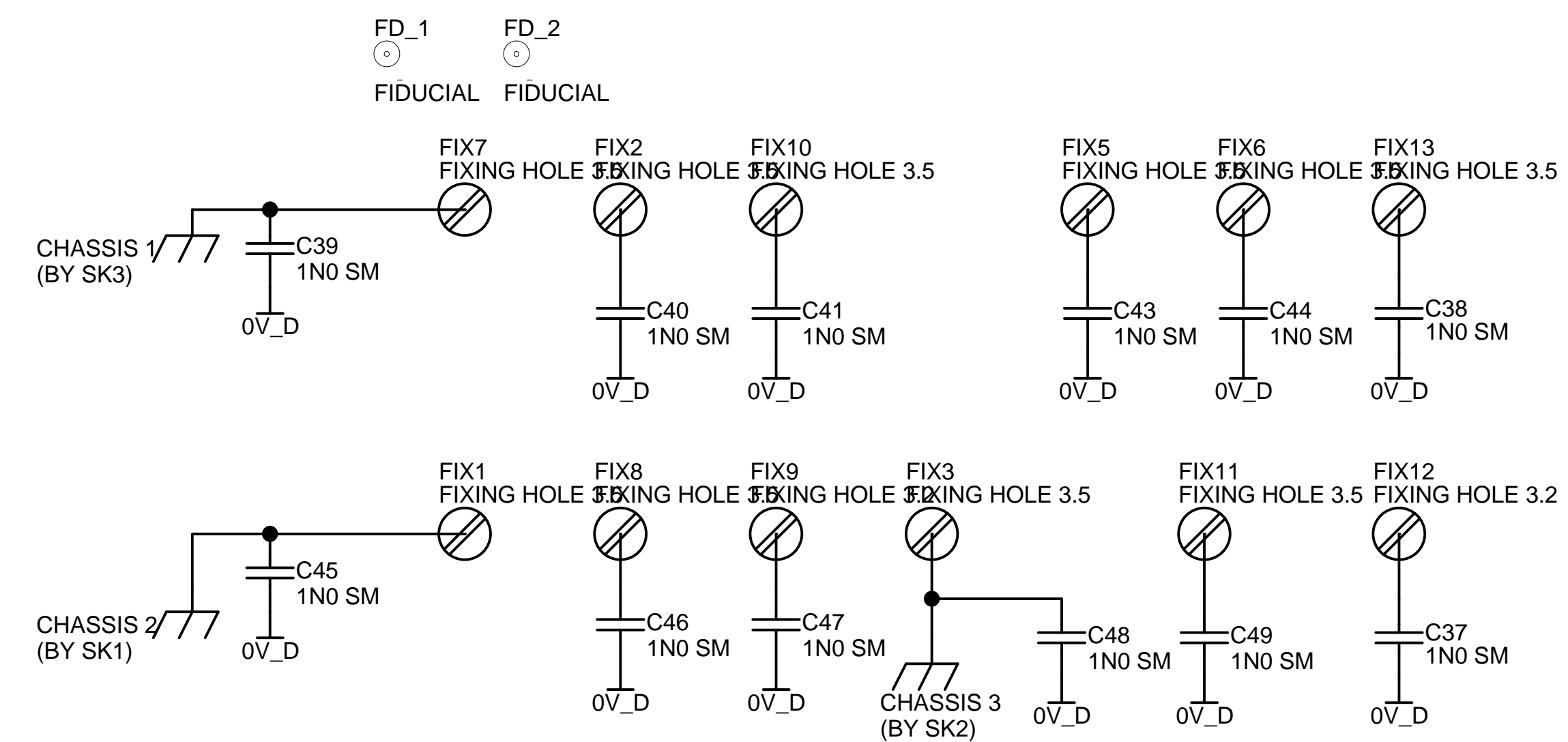
DRAWING TITLE					
A85 amplifier - power output stage right					
23425					
A & R Cambridge Ltd. Pembroke Avenue Denny Industrial Centre Waterbeach Cambridge CB5 9PB					
Circuit Diagram					
Notes:	02_E062	JBR	20/3/02	LDO REG FITTED TO IC201	4.1
	02_E035	JBR	4/2/2002	FUSE VALUES UPDATED TO T4A	4.0
Filename	L882C4_4.1.SCH	Date Printed	20-Mar-2002	Drawn by:	J Reckless
				Sheet 4 of 4	DRAWING NO. L882C4

A32 FMJ DISPLAY PCB

L928CT_B.1
L928CT_2_B.3.SCH



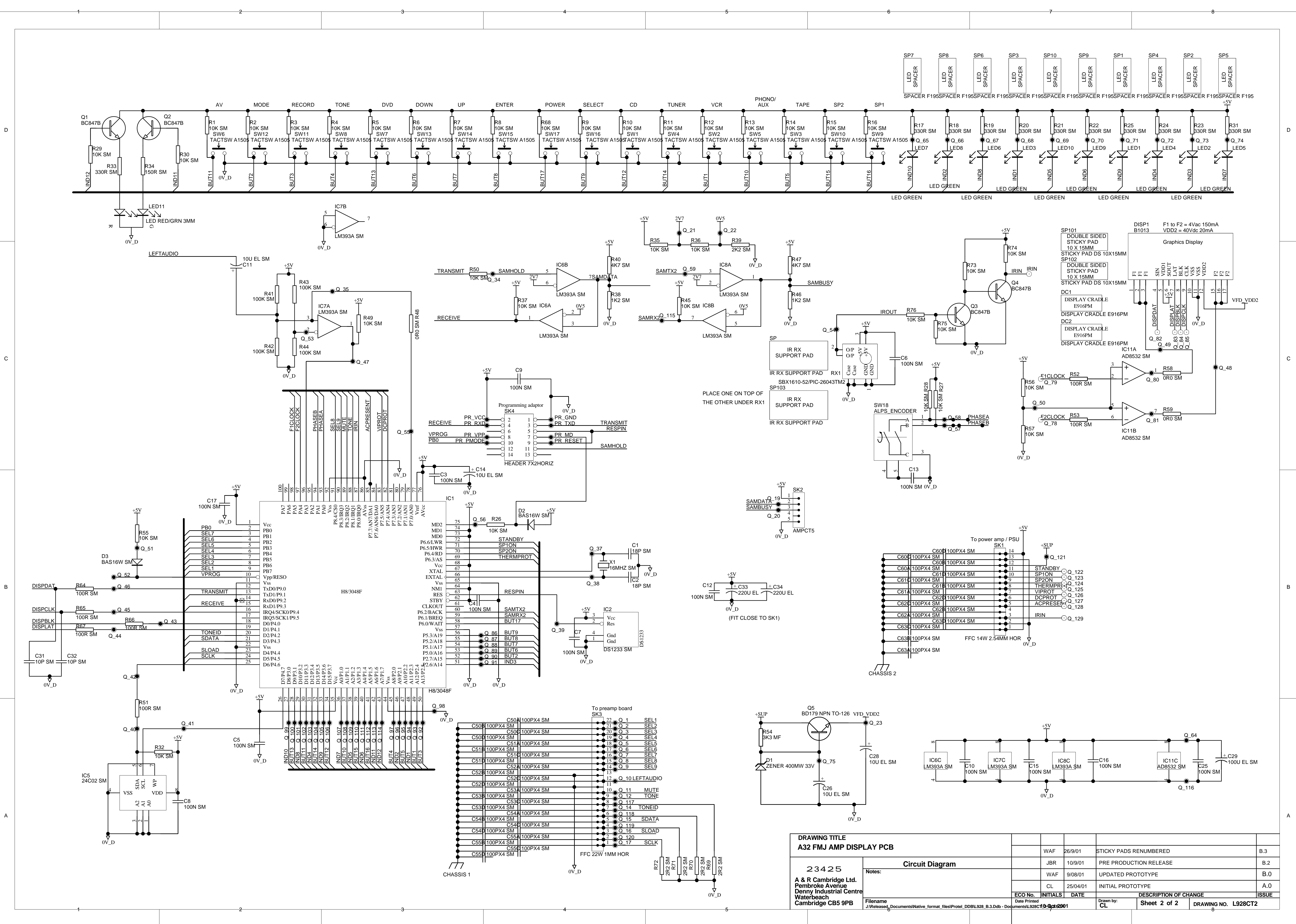
MICRO



PCB1
PCB
L928PB_B

please remove F163 sticky pads
they should not be on here

DRAWING TITLE A32 FMJ AMP DISPLAY PCB		WAF	26/9/01	STICKY PADS RENUMBERED	B.3	
23425 A & R Cambridge Ltd. Pembroke Avenue Denny Industrial Centre Waterbeach Cambridge CB5 9PB	Circuit Diagram		JBR	10/9/01	PRE PRODUCTION RELEASE	B.2
	Notes:	WAF	9/08/01	UPDATED PROTOTYPE	B.0	
		CL	25/04/01	INITIAL PROTOTYPE	A.0	
Filename J:\Released_Documents\Native_format_files\Protel_DDB\L928_B.3.Ddb - Documents\L928CT10-01.P2001	ECO No.	INITIALS	DATE	DESCRIPTION OF CHANGE	ISSUE	
	Date Printed	Drawn by:	Sheet 1 of 2	DRAWING NO. L928CT1		



DRAWING TITLE			
A32 FMJ AMP DISPLAY PCB			
23425			
A & R Cambridge Ltd. Pembroke Avenue Denny Industrial Centre Waterbeach Cambridge CB5 9PB			
Notes: Circuit Diagram			
WAF	26/9/01	STICKY PADS RENUMBERED	B.3
JBR	10/9/01	PRE PRODUCTION RELEASE	B.2
WAF	9/08/01	UPDATED PROTOTYPE	B.0
CL	25/04/01	INITIAL PROTOTYPE	A.0
ECO No.	INITIALS	DATE	DESCRIPTION OF CHANGE
			Sheet 2 of 2
Filename	Date Printed		DRAWING NO. L928CT2
J:\Released\Documents\Native format files\Protel D98\B2.3.D.B - Documents\L928CT2			8

1

2

3

4

D

D

C

C

B

B

Main signal path
L937C2_1.1.SCH



Power supply
L937C3_1.1.SCH



USE EXCLUDE NF WHEN USING RUNOUT SHEET PROGRAM

PCB1
PCB
L937PB_1

A

A

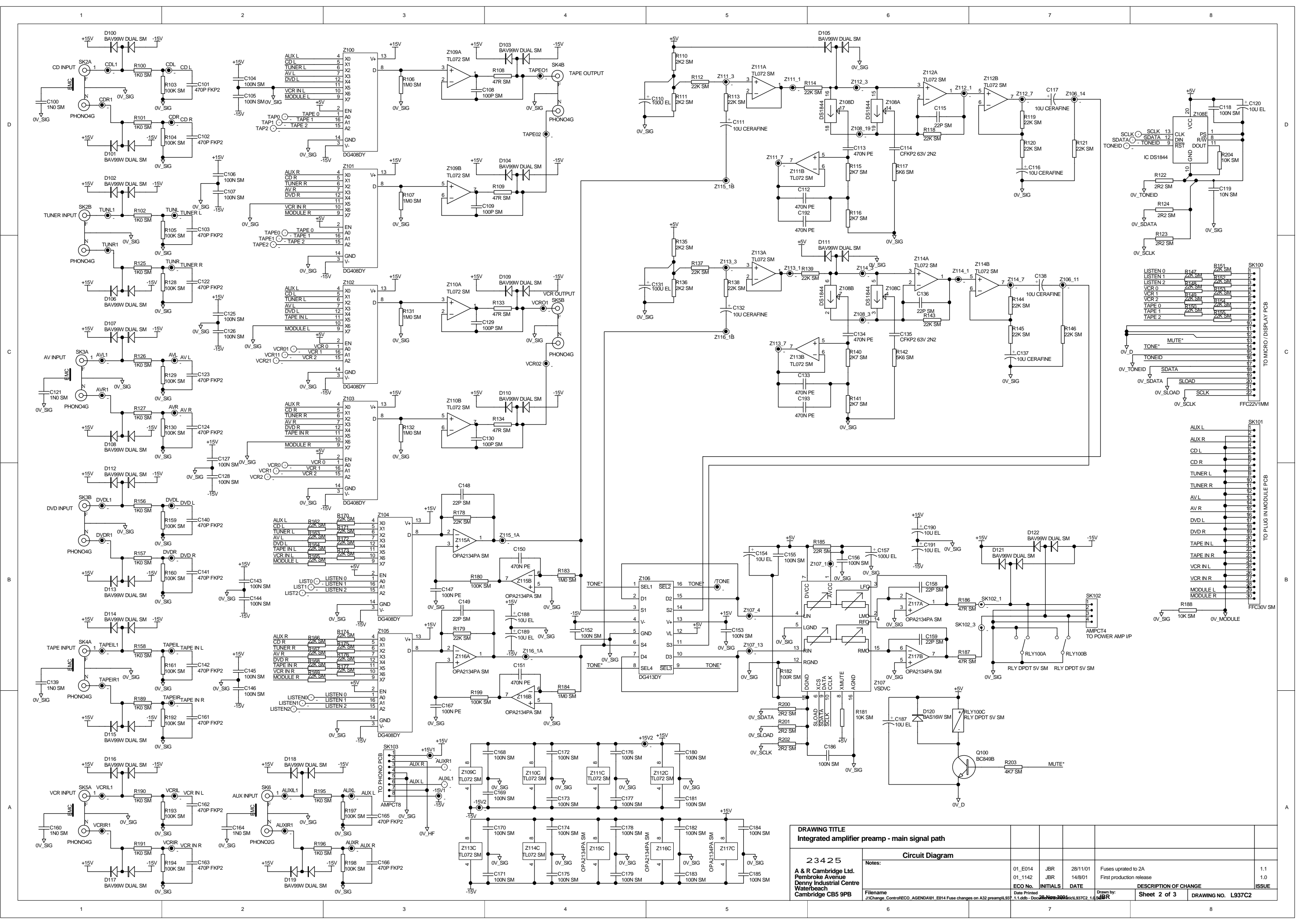
DRAWING TITLE Integrated amplifier preamp						
23425 A & R Cambridge Ltd. Pembroke Avenue Denny Industrial Centre Waterbeach Cambridge CB5 9PB	Circuit Diagram					
	Notes:	01_E014	JBR	28/11/01	Fuses uprated to 2A	1.1
		01_1142	JBR	14/8/01	First production release	1.0
Filename	Date Printed	ECO No.	INITIALS	DATE	DESCRIPTION OF CHANGE	ISSUE
J:\Change_Control\ECO_AGENDA\01_E014 Fuse changes on A32 preamp\L937_1.1.ddb - Document Schematic	28 Nov 2001		JBR		Sheet 1 of 3	DRAWING NO. L937C1

1

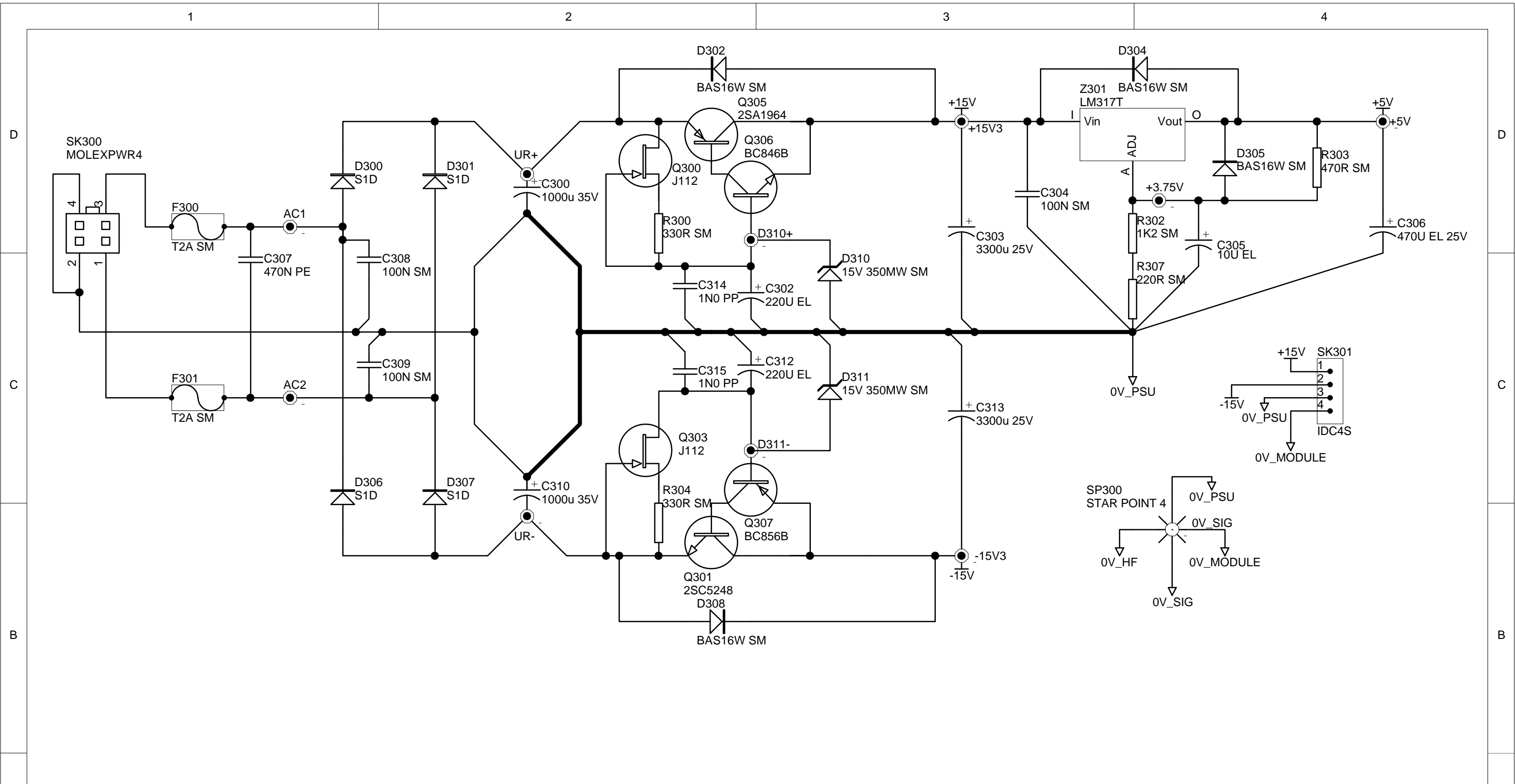
2

3

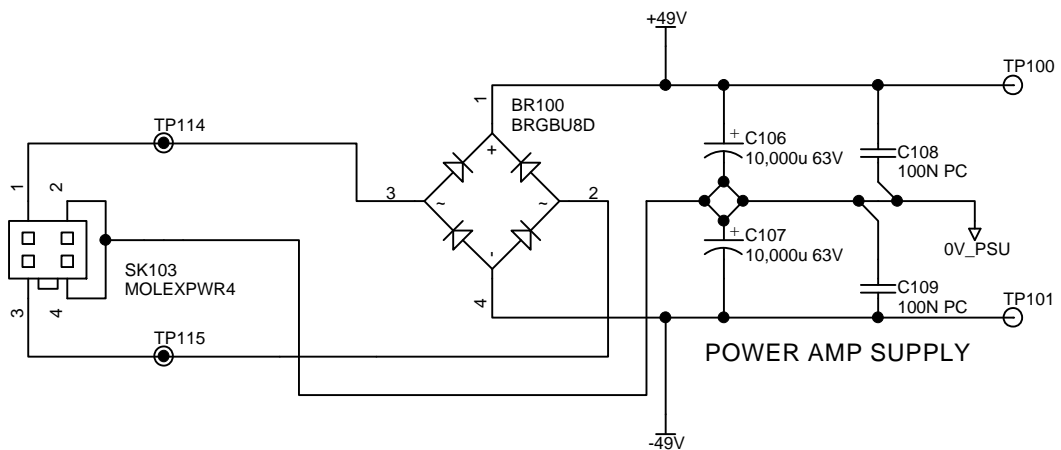
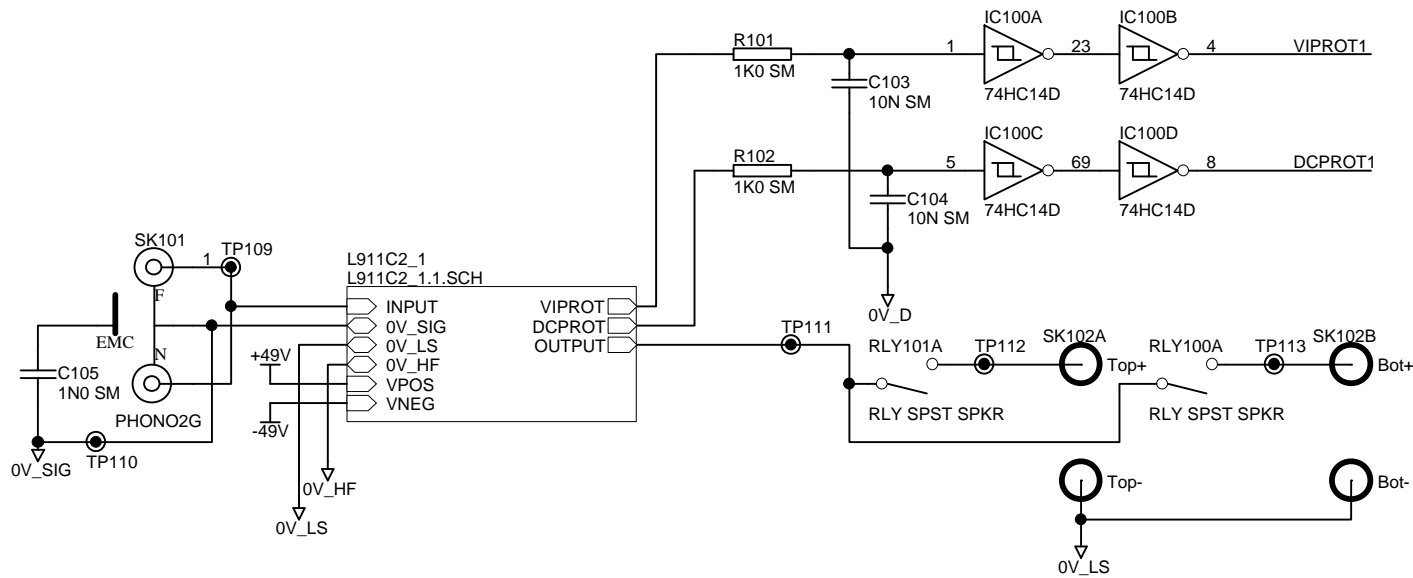
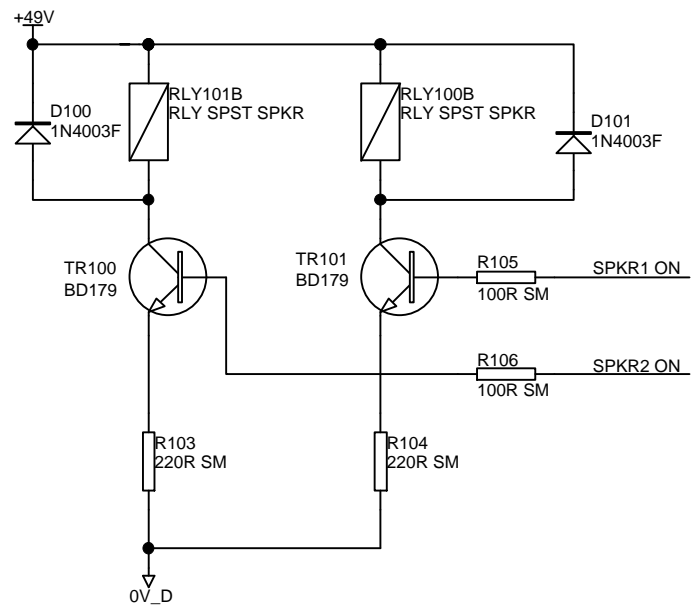
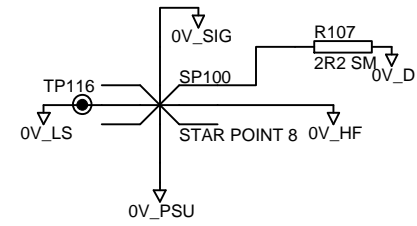
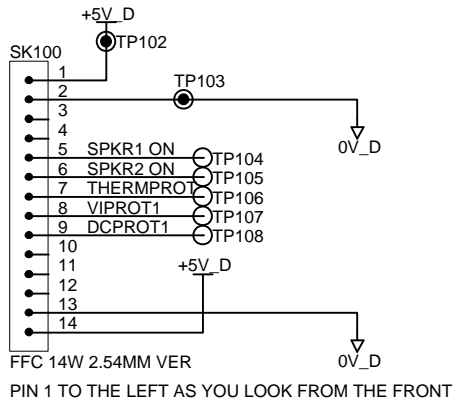
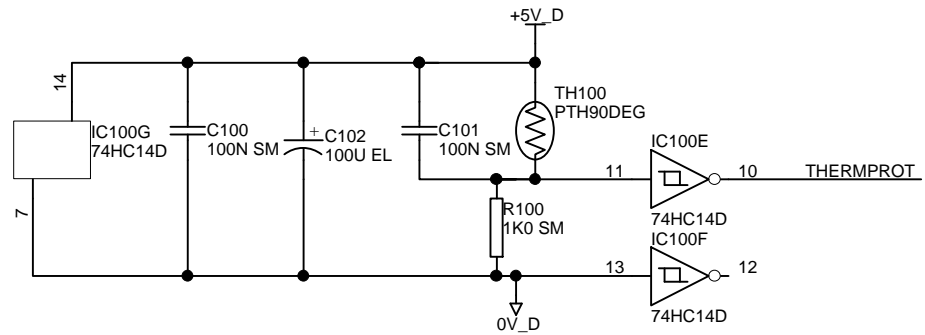
4



DRAWING TITLE		Circuit Diagram		EQUATION		REVISION		DATE		ISSUE	
23425		A & R Cambridge Ltd. Pembroke Avenue Denny Industrial Centre Waterbeach Cambridge CB5 9PB		Notes:		01_E014		JBR		28/11/01	
J:\Change Control\ECO_AGENDA\01_E014 Fuse changes on A32 preamp\937		Date Printed: 11.08.2001		ECO No.		14/8/01		Fuses updated to 2A		1.1	
J:\Change Control\ECO_AGENDA\01_E014 Fuse changes on A32 preamp\937		11.08.2001		Filename		J:\Change Control\ECO_AGENDA\01_E014 Fuse changes on A32 preamp\937		First production release		1.0	
J:\Change Control\ECO_AGENDA\01_E014 Fuse changes on A32 preamp\937		11.08.2001		Description of Change		Sheet 2 of 3		DRAWING NO. L937C2		ISSUE	



DRAWING TITLE							
Integrated amplifier preamp - power supply							
23425 A & R Cambridge Ltd. Pembroke Avenue Denny Industrial Centre Waterbeach Cambridge CB5 9PB	Circuit Diagram						
	Notes:		01_E014	JBR	28/11/01	Fuses uprated to 2A	1.1
			01_1142	JBR	14/8/01	First production release	1.0
	Filename		ECO No.	INITIALS	DATE	DESCRIPTION OF CHANGE	ISSUE
J:\Change_Control\ECO_AGENDA\01_E014 Fuse changes on A32 preamp\L937_1.1.ddb - Docu		Date Printed		Drawn by:		Sheet 3 of 3	
		28 Nov 2001		JBR		DRAWING NO. L937C3	



PB
PCB
L911PB_1

DRAWING TITLE
AP85 third channel - top level

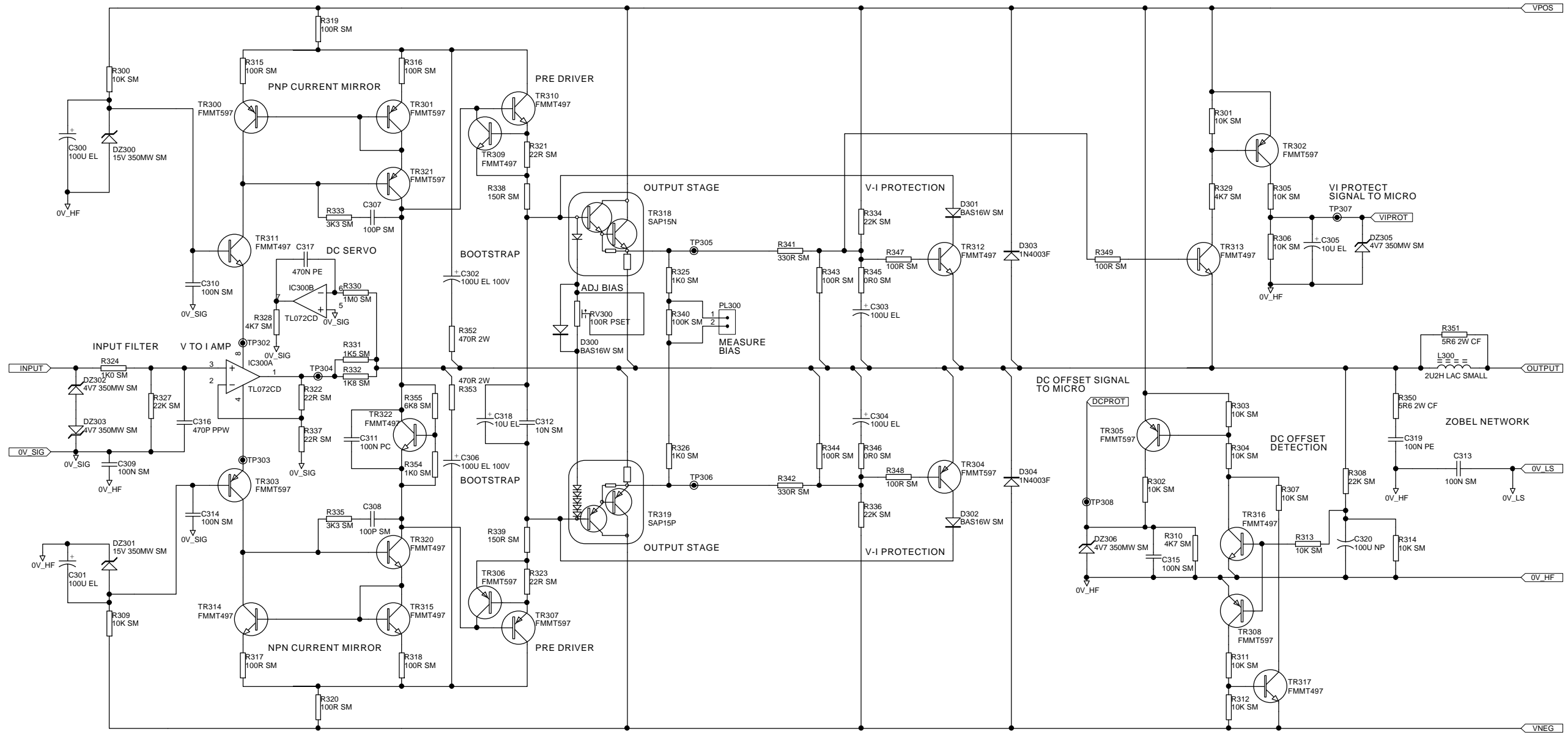
23425
A & R Cambridge Ltd.
Pembroke Avenue
Denny Industrial Centre
Waterbeach
Cambridge CB5 9PB

Circuit Diagram

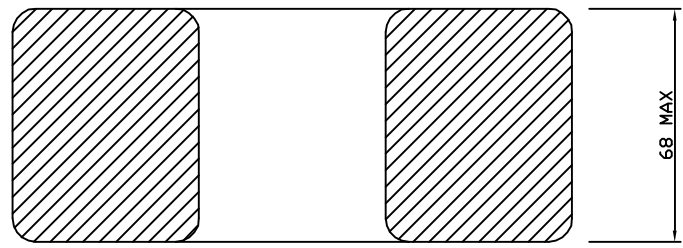
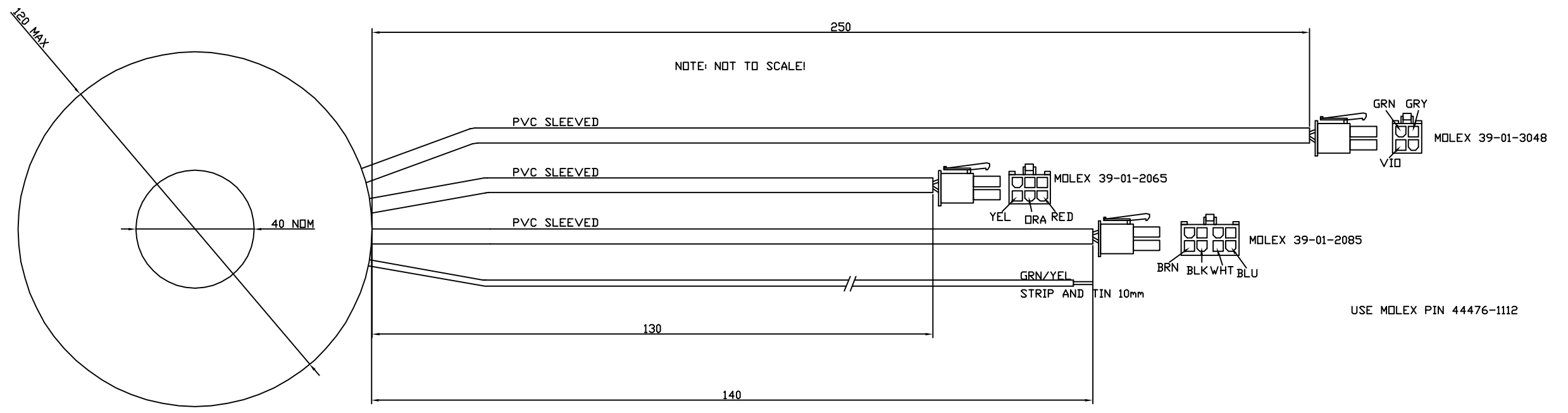
Notes:

ECO No.	INITIALS	DATE	DESCRIPTION OF CHANGE	ISSUE
01_1101	JR	4/6/01	DC OFFSET CHANGES	1.1
01_1018	JR	30/1/01	PRODUCTION ISSUE	1.0

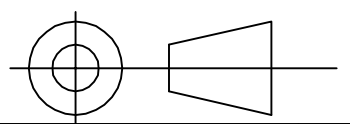
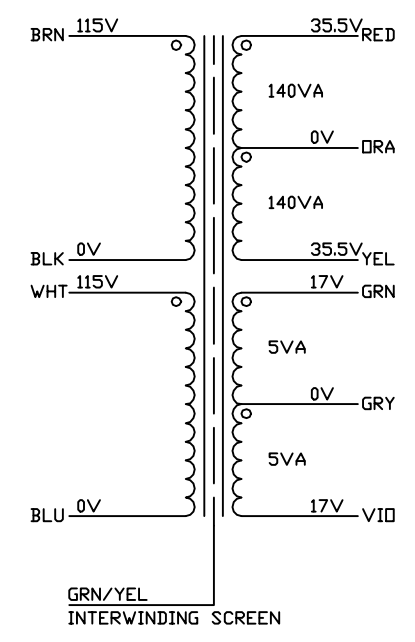
Filename: J:\ECO_wip01_1101 A85 RANGE PCB FUSES AND DC OFFSET\L911_1.1.DDB - Document 4/20/01 11:01:11 AM
Date Printed: 4/20/01 11:01:11 AM
Drawn by: J Reckless
Sheet 1 of 2
DRAWING NO. L911C1



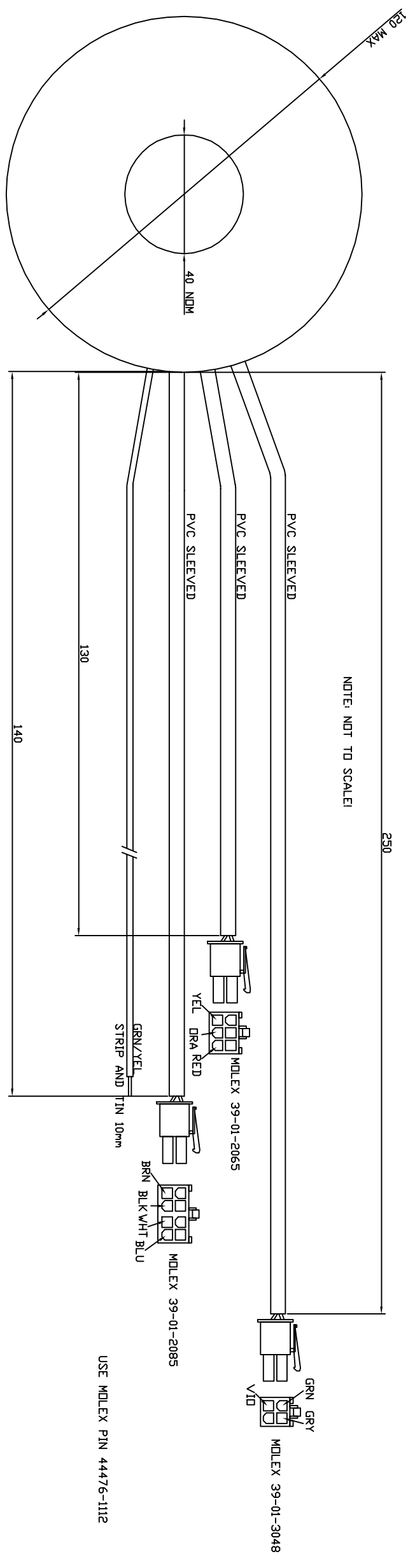
DRAWING TITLE AP85 third channel - output stage					
23425	Circuit Diagram				
A & R Cambridge Ltd. Pembroke Avenue Denny Industrial Centre Waterbeach Cambridge CB5 9PB		Notes: 01_1101 JR 4/6/01 DC OFFSET CHANGES 01_1018 JR 30/1/01 PRODUCTION ISSUE			
Filename L911C2_1.1.SCH	Date Printed 4-Jun-2001	Drawn by: J Reckless	Sheet 2 of 2	DRAWING NO. L911C2	ISSUE 1.1 1.0



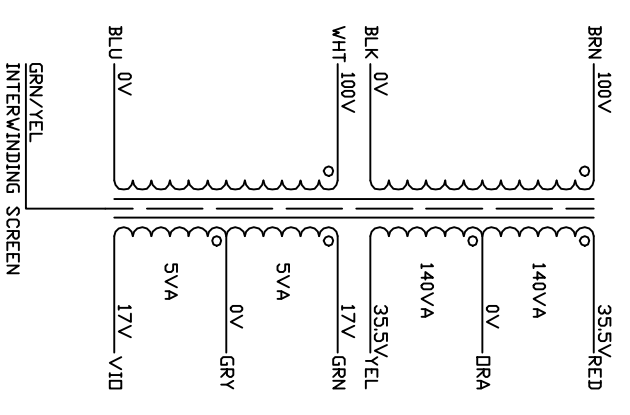
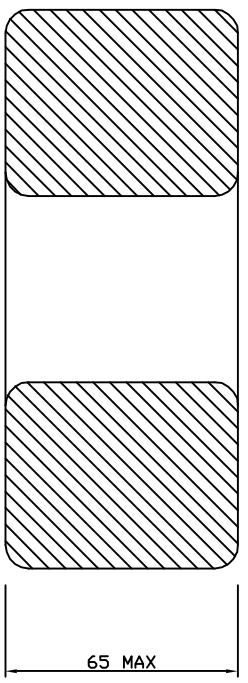
GENERAL NOTES:
 ALL VOLTAGES SPECIFIED ARE NOMINAL RMS
 WINDINGS TO BE EVENLY SPACED WITH NO GAPS
 MINIMISE SEPARATION OF LEAD OUT WIRES
 MAGNETIC RADIATION SHOULD BE MINIMISED
 MAX CORE FLUX DENSITY 1.7T AT NOMINAL RATING
 MAX OFF-LOAD PRIMARY CURRENT 130mA PER WINDING (NOMINAL VOLTAGE)
 TEMPERATURE RISE TO BE LESS THAN 60 DEG AT 30% DUTY CYCLE
 TO STANDARDS BS415 / EN60065 / CLASS I / EN60742 / UL506
 ALL WIRES TO BE 20AWG UL1015 RATED OR GREATER
 OFF LOAD SECONDARY RMS VOLTAGES TO BE LESS THAN 10% ABOVE RATED ON-LOAD
 CORE MUST NOT SATURATE AT 20% OVER VOLTAGE



Itemref	Quantity	A32 MAINS TRANSFORMER		Article No./Reference	
Designed by	Checked by	Filename	Date	Scale	
J RECKLESS			10 SEP 2001	N.T.S.	
L914TX			A&R CAMBRIDGE LIMITED (ARCAM)		
			ISSUE		
			1		



GENERAL NOTES:
 ALL VOLTAGES SPECIFIED ARE NOMINAL RMS
 WINDINGS TO BE EVENLY SPACED WITH NO GAPS
 MINIMISE SEPARATION OF LEAD OUT WIRES
 MAGNETIC RADIATION SHOULD BE MINIMISED
 MAX CORE FLUX DENSITY 1.7T AT NOMINAL RATING
 MAX OFF-LOAD PRIMARY CURRENT 130mA PER WINDING (NOMINAL VOLTAGE)
 TEMPERATURE RISE TO BE LESS THAN 60 DEG AT 30% DUTY CYCLE
 TO STANDARDS BS415 / EN60065 / CLASS I / EN60742 / UL506
 ALL WIRES TO BE 20AVG UL1015 RATED OR GREATER
 OFF LOAD SECONDARY RMS VOLTAGES TO BE LESS THAN 10% ABOVE RATED ON-LOAD
 CORE MUST NOT SATURATE AT 20% OVER VOLTAGE



Itemref	Quantity	A32 MAINS TRANSFORMER 100V	Article No./Reference
Designed by	Checked by	Filename	Date
J RECKLESS			31 MAY 2000
A&R CAMBRIDGE LIMITED (ARCAMP)			Scale
L 915TX			N.T.S.
			1
			ISSUE

