

Multi-Room Audio, Video, Data and Control

Multi-Room Audio, Video, Data and Control



AUTHORISED DEALERS ONLY

There's nothing quite like experiencing hi-fi music and movies all around the home. Systemline Modular is an 'invisible' integrated entertainment system which adds a real 'wow' factor to any home.

- Range of options to suit your customer requirements.
- Ultra simple installation, runs on standard Cat5e cable.
- Reliable, proven technology – over 15 years experience with 1000's of systems fitted across Europe.
- Comprehensive 3 year warranty and dedicated technical support team.



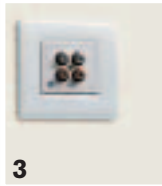
1

The system is wired back to a compact hub which is installed in a hidden enclosure along side other home services e.g. electrics.



2

Plug your TV into the wall socket and watch high quality video throughout your home – including DVD, satellite and even CCTV.



3

Just plug your hi-fi or home theatre system into the wall socket and listen to high quality sound – in any room in your home.



4

Unique in-ceiling amplified speakers deliver outstanding high fidelity sound without intruding into your living space.



5

As simple as one touch of the discreet keypad or... one of the most elegant and straight forward hand sets that you will ever use.

- Standard wiring uses standard CAT5 UTP
- Cabling to EIA/TIA 568B standard
- First class hi-fi sound reproduction and high noise immunity
- Class D amplifiers ensure no compromise on sound quality
- Energy efficient design
- Unique quasi-digital transfer technique provides 85% power transmission efficiency without wasteful heat dissipation
- Sophisticated interconnectivity of Modular components
- Ease of installation, fail-safe protection, and rugged reliability
- All connections are via data industry standard 110 punch-down connections. Systemline Modular is exceedingly well protected and is almost impossible to damage by accidental incorrect termination
- Space efficiency in just about any home, the last thing that anybody wants is clutter. Systemline Modular eliminates the need for large amplifiers. The single source audio hub measures 145 x 132 x 42.5mm, about the same front size as a single CD case!
- Control options
- Systemline Modular can be controlled by an infra-red handset or wall-mounted keypad. Options include built-in infra-red receivers, and keypads. The system provides an infra-red relay, allowing third-party hi-fi equipment to be controlled from any zones or sub-zones using the manufacturer's original remote control.

To see more download the movie at www.systemline.co.uk/modularmovie

Modular Demo Case

Modular Demo cases are available. Please contact your Area Sales Manager for details

Stock Code:
SYST-DK SYSTEMLINE DEMO KIT



Packages

HCZ-5.1 Home Cinema Zone Pack

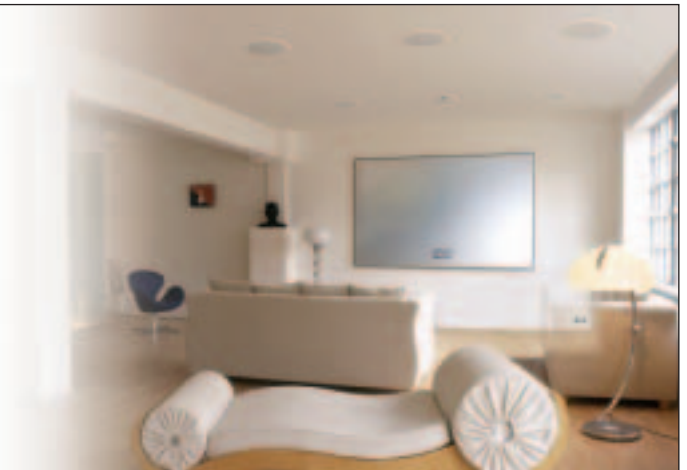
Contains everything that is required for an installation of a 5.1 In-Ceiling Home Theatre system. Can be used with either single source or multi-source hub systems as option. When installed along with either hub package, it is possible to achieve both stereo sound and 5.1 home theatre from all of the speakers, switching seamlessly with a press of the remote.

System Pack includes:

- 1 x HCCP including 5.1 connecting cable
- 1 x SLM2.1/IR
- 2 x ALM2.1
- 1 x SLM2.1/SUB
- 1 x PSM80

Stock Code:

HCZ-5.1 MDLR M/SOURCE HCZ-5.1 H/TH PCK



Systemline Modular Components

LRN-7 Learning Programmable Remote Control

Infrared learning handset for directly learning commands from source remotes to handset. Alternative USB port on remote enabling programming from PC software. Provides ability to control B&O equipment within a room (not able to pass codes to remote rooms). Backlit blue buttons that can click, beep or be muted when in use.

Features:

- Learning and control of at least 7 infra-red devices
- Plug and play set up
- Direct learning of IR codes. Can learn a comprehensive range of IR codes directly from original source handsets without the need for PC's or software
- Extended IR support. Will learn Bang & Olufsen and Pioneer Elite Series IR codes
- USB interface - High Speed link with PC - IR Code Library - Remote configuration via easy to use software - Backup of configurations allows 'cloning' of handsets
- Macro support
- Up to 8 commands per key per source, with programmable delays
- Flash programmable firmware. Allows future upgrades to be uploaded as required
- Adjustable user preferences - 2 different key press sounds or can be muted - 3 LED brightness levels - Child Lock prevents unauthorised access - IR Lockout prevents battery loss by inhibiting IR transmission if any key on the handset is accidentally kept pressed down

Specifications:

- Dimensions L x Dia: 250 x 43mm
- Battery Type: 3 x AAA 1.5V (supplied)

Stock Code:

LRN-7 MDLR M/SOURCELRN-7 HANDSET

RM1 Infra-Red Remote Control

A stylish anodised Aluminium infra-red remote control handset for use with either infra-red enabled speakers or via a KPM keypad. It turns zone on/off, increases/decreases volume, tone and volume settings and mutes the zone and allows selection of local input.

Specifications:

- Dimensions L x Dia: 155 x 21mm
- Battery Type: 12V MN21 (supplied)

Stock Code:

SYS-RM1 MDLR RM1 IR REMOTE



Packages

HPM-16 Single Source Starter Pack (1 Input 6 zone)

This "Starter Pack" contains everything that is required for an installation of up to six zones excluding speakers and keypads (one remote handset is included in the pack). This pack would be analogous to an Integrated Controller in a home-run system, but unlike a controller, would include all connection plates.

System Pack includes:

- 1 x CIM (SIM & IRM & double gang mounting frame - white)
- 1 x RM1 handset including battery
- 1 x PSM130 hub power supply
- 1 x HM1 hub (with wall mount bracket)
- 1 x mains lead
- 2 x SL-SE super window emitters
- 1 x Systemline 1.5m phono cable
- 1 x CD-ROM (full planning & installation instructions)
- 1 x User Guide
- 1 x Quick Install Guide

Stock Code:

- HPM-16** MDLR HPM16 HUB STARTER PACK (NO SPEAKERS)
- HPM-16-SP4** (INCLUDES 4 PAIRS SPEAKERS)
- HPM-16-SP6** (INCLUDES 6 PAIRS SPEAKERS)



The hub is required for all installations featuring two or more zones. It is designed to be fixed to the wall in an unobtrusive place, such as an understairs cupboard using the supplied mounting brackets. Alternatively it can be enclosed within a structured wiring box such as those offered by On-Q, Open House, or Hellermann & Tyton (Home Cabling). Various adaptor brackets to fit such enclosures will be available. The hub has inputs for a power supply and direct audio input. It also has a balanced line audio input for the connection of a remotely located hi-fi system or music source together with IR, power, and audio routing to each zone.

MSA-68 Multi-Source Audio Pack (6 input 6 zone)

This "Starter Pack" contains everything that is required for an installation of up to 6 inputs & 6 zones* excluding speakers and keypads etc (one remote control handset is included in this pack).

System Pack includes:

- 1 x MIM Multi-source input plates (up to 4 inputs per plate) - this allows a selection of up to 4 sources from one location
 - 2 x CIM to connect a further two sources from alternative locations (or use for local inputs if required)
 - 1 x LRN7 Learning handset inc battery
 - 1 x PSM130 power supply inc mains lead
 - 1 x AM8 Audio Hub inc mounting bracket
 - 6 x SL-SE super window emitters
 - 6 x Systemline 1.5 metre phono cable
- * Add a second PSM130 power supply to expand to 8 zones.

Stock Code:

- MSA-68** MDLR M/SOURCE MSA-68 AUDIO PCKG (NO SPEAKERS)
- MSA-68-SP4** (INCLUDES 4 PAIRS SPEAKERS)
- MSA-68-SP6** (INCLUDES 6 PAIRS SPEAKERS)



Designed to be fixed to the wall in an unobtrusive place, such as an understairs cupboard using the supplied mounting bracket. Alternatively it can be enclosed within a structured wiring box such as those offered by On-Q, Openhouse or Hellerman Tyton. The hub has inputs for two power supplies, one delivering power for up to 6 zones, the other required to expand system to 8 zones. Supplied as part of the MSA68 Multi-source audio pack.

VXP-68 Multi-Source Video Xpansion Pack (6 video inputs to 8 zones)

Contains VM8 video distribution hub and 6 x video baluns for either inputs or outputs. The hub is able capable of distributing upto six sources to eight zones. Video distribution via cat5 cabling in composite format. Derives power from multi-source audio hub. Can be used with conventional RJ45 wallplates within installation.

System Pack includes:

- 1 x VM8 Video Hub (including mounting bracket)
- 6 x VBLN video baluns
- 1 x Umbilical cable to AM8 Audio Hub
- 6 x Systemline 0.5 metre video cable

Stock Code:

- VXP-68** MDLR M/SOURCE VXP-68 VIDEO PCKG



Required for Multi-source installations only to deliver video distribution via Cat5/6 cabling. Derives power from Multi-source audio hub (AM8) via Cat5 umbilical link enabling seamless switching of multi-source audio and video sources. Supplied with mounting bracket for discreet installation. Can also be installed into market leading structured wiring enclosures. Supplied as part of VXP-68 Multi-source video pack.

Systemline Modular Components

Every Systemline Modular multi-room system will contain at least one active loudspeaker. The speaker drive units are carefully matched to a high efficiency class D amplifier specified to deliver first class quality hi-fi sound. The active speaker can be used alone in mono mode (just by flipping a switch) or with a partnering passive speaker for stereo use. Each active speaker can be adjusted to turn on at the volume level of choice, and to limit the maximum volume (great for kids' rooms!). Bass and treble equalisation can also be set to compensate for compromised speaker placement, or to allow for personal taste.



SUPPLIED IN PAIRS

ALM2.1/IR
Supplied in Pairs
 Active Stereo Loudspeaker System with IR

Comprises:
 1 x SLM2.1/IR active speaker with IR receiver
 1 x PLM2 passive speaker

Specifications:

- Driver Units: Tweeter - 25mm soft-dome multi-positional tweeter Bass /Mid - 133mm Polypropylene driver
- Dimensions: 228 x 90mm
- Mounting Depth: 95mm
- Cutout: 195mm
- Mounting Depth: 95mm
- Active Speakers Weight: 1.82Kg
- Passive Speakers Weight: 1.28Kg

Stock Code:
ALM2/IR
 ACTIVE LOUDSPEAKER PAIR (IR ENABLED): 1 X ACTIVE, 1 X PASSIVE



SUPPLIED IN PAIRS

ALM2.1
Supplied in Pairs
 Active Stereo Loudspeaker System

Comprises:
 1 x SLM2.1 active speaker
 1 x PLM2 passive speaker

Specifications:

- Driver Units: Tweeter - 25mm soft-dome multi-positional tweeter Bass /Mid - 133mm Polypropylene driver
- Dimensions: 228 x 90mm
- Cutout: 195mm
- Mounting Depth: 95mm
- Active Speakers Weight: 1.82Kg
- Passive Speakers Weight: 1.28Kg

Stock Code:
ALM2
 ACTIVE SPEAKER PAIR (NON IR; 1 X ACTIVE, 1 X PASSIVE)



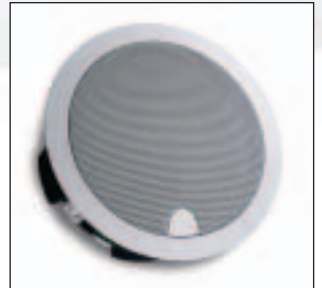
SLM2.1/IR
Supplied Singly
 Active Loudspeaker with IR

Comprises:
 1 x SLM2.1/IR active speaker with IR receiver

Specifications:

- Driver Units: Tweeter - 25mm soft-dome multi-positional tweeter Bass /Mid - 133mm Polypropylene driver
- Dimensions: 228 x 90mm
- Cutout: 195mm
- Mounting Depth: 95mm
- Weight: 1.82Kg

Stock Code:
SLM2/IR
 ACTIVE LOUDSPEAKER SINGLE (IR ENABLED)



SLM2.1
Supplied Singly
 Active Loudspeaker

Comprises:
 1 x SLM2.1 active speaker

Specifications:

- Driver Units: Tweeter - 25mm soft-dome multi-positional tweeter Bass /Mid - 133mm Polypropylene driver
- Dimensions: 228 x 90mm
- Cutout: 195mm
- Mounting Depth: 95mm
- Weight: 1.82Kg

Stock Code:
SLM2
 ACTIVE LOUDSPEAKER SINGLE (NON IR)



ZAM-40
 20 watts per channel RMS zone amplifier. Designed as an alternative to amplified speakers e.g. outdoor speakers; alternative brands of in-ceiling speaker; where there is a requirement to drive floor standing or box speakers. Connects via Cat5 from hub; delivers 12W per channel. Through additional local power supply or remote power via additional Cat5 run; delivers up to 22w per channel. Has built in pre-outs for adding external power amplification if necessary. Ideal solution for legacy installations such as structured wiring projects where Cat5 may not be used by client for data or telecoms. Allows the ability in such circumstances to offer retrofit multi-room installations. (Not able to be utilised for expanded or sub zones). Used when customer wishes to select other specialist speakers.

Specifications:

- 1 Balanced line system input (RJ45 socket)
- 1 Keypad input (RJ45 socket)
- 1 x IR input (3.5mm Jack)
- 1 x Stereo pre-amp output (3.5mm stereo Jack)
- 1 x Stereo line input (3.5mm stereo Jack)
- 1 x Remote power input (RJ45)
- 1 x Direct power input (Din socket)
- 4 x Screw fix speaker terminals
- Dimensions W x D x H: 186 x 106 x 39.3mm

Stock Code:
ZAM40 MDLR M/SOURCE ZAM-40

Systemline Modular Components



Features:

- Seven input selection keys with status illumination
- Volume up/down keys and volume level display
- Mute key
- Navigation keys
- Stop key
- Skip forward key
- Skip back key
- Channel + key
- Channel - key
- Direct Learning capability
- USB connection for uploading codes from a PC and to create a back-up file if required
- Macro capability using PC link
- Built-in IR receiver
- Built-in zone set-up capabilities including adjusting Bass & Treble etc
- Fits in a standard UK double back box and is available with a wide choice of clip on fascia surrounds
- Option for audio feedback on button press.

Specifications:

- Requires standard double gang UK back box (44mm deep)
- Dimensions W x D x H: 144 x 40 x 86mm

LKPM7.1

Learning multi-source keypad module. Expanding on the simple control of the KPM7, the new learning handset allows for enhanced control of source equipment. LKPM7.1 combines simple source selection with navigation controls such as track skip, disk skip, pre-set up & down.

Stock Code:

LKPM7 LEARNING KEYPAD



A wide variety of optional snap-on metal faceplates including Satin Nickel, Black Chrome, Polished Chrome and Brass are also available. Please see Systemline Accessories section for different options.

KPM-1.1

Updated version of KPM1 compatible with Multi-source speakers. KPM1.1's are also used on sub-zone applications in multi-source systems. The wall-mounted keypad fits in a standard (44mm) deep single-gang back box. It contains an IR Sensor and keys turn the zone on/off, increase/decrease volume, and allow selection of local input. Available in White and Black.

Specifications:

- Integral IR receiver
- Requires standard single gang UK back box (44mm deep)
- Dimensions W x D x H: 86 x 38 x 86mm

Stock Code:

KPM1/WE BASIC SINGLE SOURCE KEYPAD WHITE
KPM2/BE BASIC SINGLE SOURCE KEYPAD BLACK

KPM-7

Basic Multi-source keypad module. Provides source selection of inputs together with volume control. Source inputs are backlit blue, with local source backlit green. Available in either White or Black.

Specifications:

- Dimensions W x D x H: 86 x 45 x 86mm
- Integral IR receiver
- Requires standard single gang UK back box (44mm deep)

Stock Code:

KPM7/WE M/SOURCE KPM-7 KEYPAD IN WHITE
KPM8/BE M/SOURCE KPM-7 KEYPAD IN BLACK



Systemline Modular Components



MIM-4 Multi Source Input Plate

Line level source input module for four sources, designed to fit a standard double gang (44mm) deep back box. RCA phono outputs are provided for each source input. Required by Systemline Modular Multi-source, a separate pair of unbuffered RCA phono outputs is provided for each source input to all the audio to be looped back into the hi-fi system if required. Four IR outputs are also included.

Specifications:

- Punch down termination to system
- Requires standard double gang UK back box (44mm deep)
- Dimensions W x D x H: 145 x 45 x 86mm

Stock Code:

MIM4 MIM-4 INPUT PLATE



SIM-E Line Level Source Input Module

The line-level source input module is designed to fit into a standard single-gang (44mm) deep back box, and converts line-level RCA phono inputs to balanced line audio over CAT5/6 cables, as required by Systemline Modular. A separate pair of unbuffered RCA phono outputs is provided to allow the audio to be looped back into the hi-fi system if required.

Specifications:

- Punch down termination to system
- Requires standard single gang UK back box (44mm deep)
- Dimensions W x D x H: 86 x 40 x 86mm

Stock Code:

SIM SOURCE INPUT MODULE



HCCP Home Cinema Connection Plate

Home Cinema connection plate (incl. 5.1 connecting cables). Supplied as part of HCZ5.1 home theatre pack.

Specifications:

- Punch down termination to system

- Requires standard double gang UK back box (44mm deep)
- Dimensions W x D x H: 145 x 55 x 86mm

Stock Code:

HCCP HCCP INPUT PLATE



CIM-E

The SIM and IRM can be supplied to fit together into a standard (44mm) double-gang back box. The part number for this combination is CIM.

Specifications:

- Punch down termination to system

- Requires standard double gang UK back box (44mm deep)
- Dimensions W x D x H: 144 x 40 x 86mm

Stock Code:

CIM COMB SIM/IRM MODULE

Systemline Modular Components



VBLN
Supplied Singly or within a VXP-68 Pack
 VBLN used to convert a composite video feed to Cat5 to allow Multi-source distribution. Within each room VBLN can be used to convert Cat5 back to composite to allow connection to a screen.
 Six VBLN's are supplied with an VM8 video hub to make up the VXP68 Multi-source video hub.

- Specifications:**
- 1 x Balanced line video input/output (RJ45 socket)
 - 1 x Composite video input/output (phono)
 - Dimensions W x D x H: 24.3mm x 45mm x 24.4mm

Stock Code:
VBN MDLR M/SOURCE
 VBLN VIDEO BALUN



PIM-3
 External power input module. Powers three pairs of speakers via Cat5 from one power feed. Ideal for installations with sub zone or expanded zone configurations.

- Specifications:**
- 1 x Power input (RJ45 socket)
 - 3 x Power output (RJ45 socket)
 - Dimensions W x D x H: 60mm x 70mm x 45mm
 - Requires PSM130 power supply active to drive three additional speaker pairs

Stock Code:
PIM-3 MDLR M/SOURCE PIM-3
 P/INPUT MOD



CIM/PI
 In-line version of the CIM wallplate. Ideal for use where RJ45 wallplates have been fitted and CIM audio plates are not viable. Provides stereo audio input and IR outputs.

- Specifications:**
- Stereo input (2 x phono)
 - 2 x IR emitter outputs (3.5mm jack)
 - 1 x Balanced line audio output (RJ45)
 - Dimensions W x D x H: 60mm x 70mm x 45mm

Stock Code:
CIM/PI MDLR M/SOURCE CIM/P1
 COMBI PORT

Two power supplies are available for use with Systemline Modular. The 130W model is a switched mode supply with fan cooling, and this should be used with the hub to provide power to six zones. The 45W power supply should be used for single zone and sub-zone applications. Mounting cradles are supplied for each power supply. Note: Use of any other power supplies invalidates the Systemline Modular guarantee.



PSM130 Power Supply
 130W power supply

Specifications:

- Dimensions W x D x H: 86mm x 195mm x 54mm

Stock Code:
PSM130 QED MDLR PSM
 130 130w P/SUPPLY/CRDL



PSM45 Power Supply
 45W power supply.

Specifications:

- Dimensions W x D x H: 75mm x 146mm x 43mm

Stock Code:
PSM45 QED MDLR PSM 45 45w
 P/SUPPLY/CRADLE



PSM80 Power Supply
 80W power supply.

Specifications:

- Can be used to power zones 7 + 8 on AM8 HUB

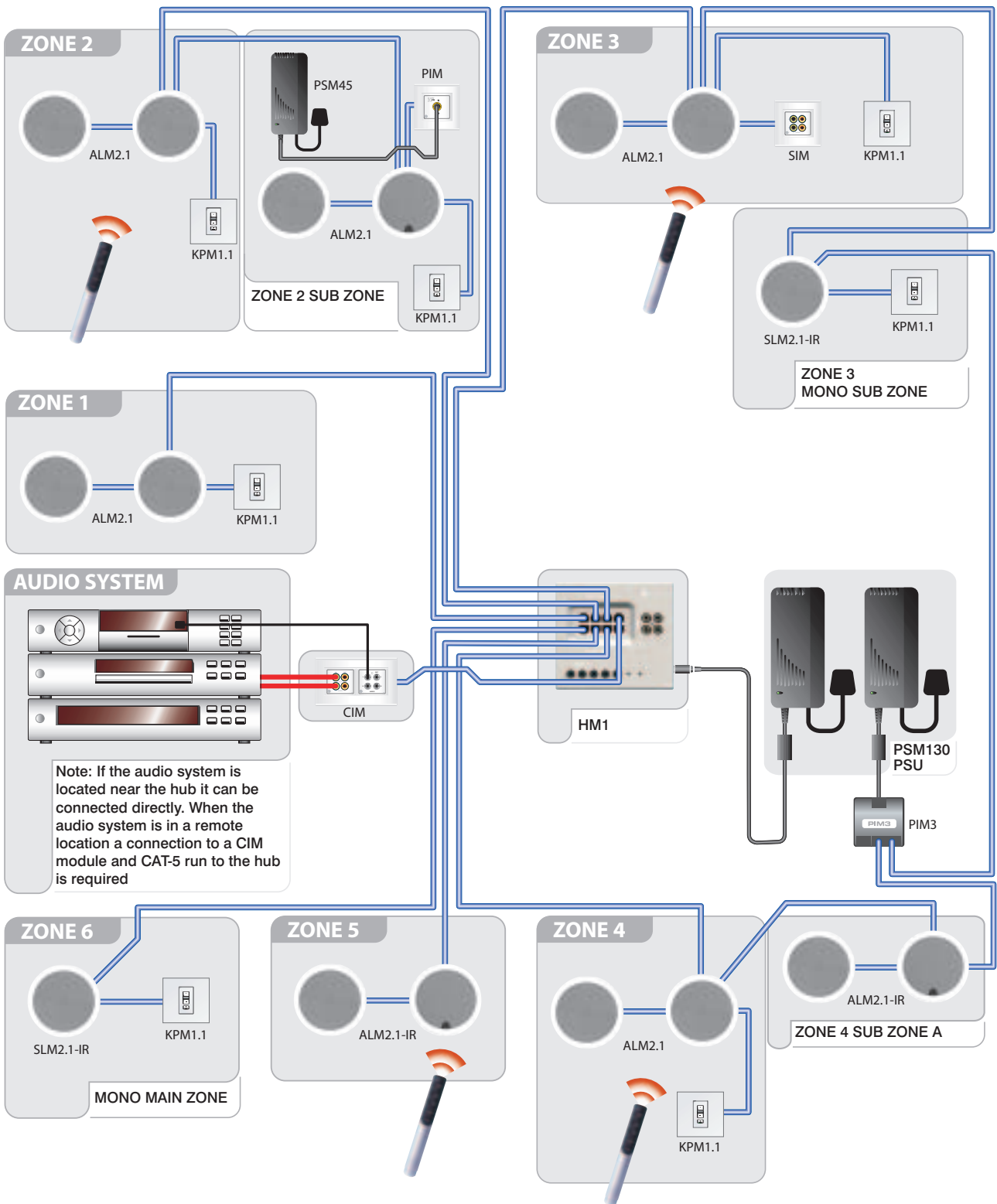
Stock Code:
PSM80 QED MDLR PSM 80 80w
 P/SUPPLY/CRADLE



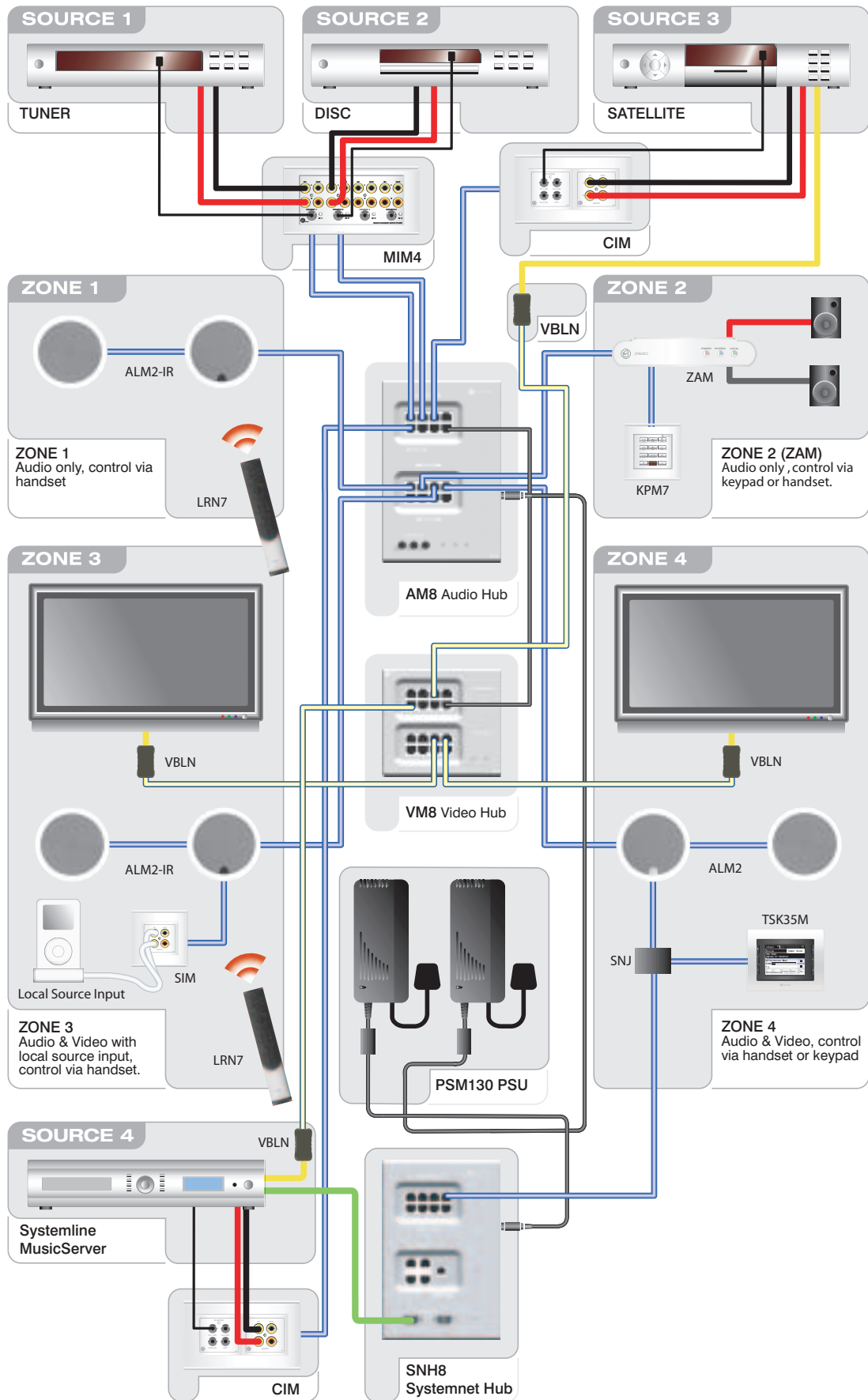
PIM Power Input Module
 The power input module is designed to fit into a standard single-gang (44mm) deep back box. It is used in conjunction with a PSM45 power supply to power a single zone system, expanded or sub-zone active loudspeaker pair.

- Specifications:**
- Integral IR receiver
 - Requires standard single gang UK back box (44mm deep)
 - Dimensions W x D x H: 86mm x 86mm x 38mm
- Stock Code:**
PIM MDLR PIM POWER INPUT MOD

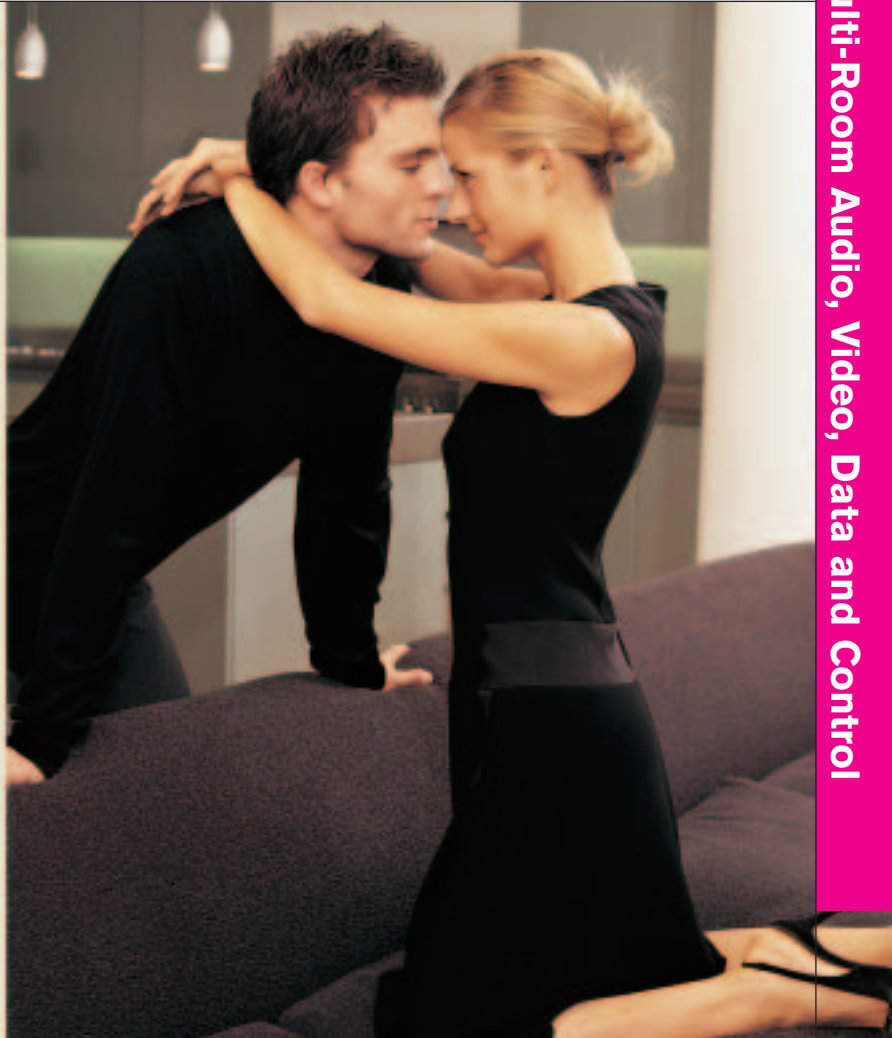
Systemline Modular Single Source - Example Schematic



Systemline Modular Multi-source / Video - Example Schematic



The Systemline Modular Advanced Range



Expanding on the world's only truly scalable multi-room system, Modular Advanced takes the system further in terms of controllability with the addition of feedback from sources and integration with other home automation products. Modular Advanced "talks" to individual source components via RS232, providing real time – two-way feedback from the likes of Imerge (Xiva based servers), viewing all content for favourite artist, Album and playlist, DAB/FM Tuner (Arcam DT91) with full meta data feedback and lighting control of Lutron Grafik Eye. With a built-in alarm facility.

■ Packages

NEW PRODUCT

■ SNHP8 Systemnet Hub Pack

This starter pack contains everything that is required for an installation of up to eight zones excluding touch Panels keypads etc. Distributes data and IR control to and from sources to TSK35M touchscreens.

■ Features:

- 8 output hub
- Exclusively run via CAT5 UTP Cabling
- Links via SNB Systemnet Junction boxes to TSK35M touch screens for real time feedback.
- 1 x SNH8 – Systemnet Hub
- 2 x RS232 cables
- 1 x USB programming cable
- 1 x PSM45 power supply
- 1 x CD-ROM
- 1 x Installation guide

■ Specifications:

- All CAT5 UTP wiring – simple & cost effective
- Distributes six audio and video source to up to eight zones + local inputs
- 2 x RS232 outputs for integration with two-way control products.
- Dimensions W x D x H : 148 x 43 x 220mm
- Requires integration with MSA-68 hub pack. Cannot be used independently of Modular system.

■ Stock Code:

SNHP8UK SYSTEMNET HUB PACK



Components



TSK35C

New colour Touch screen provides full control and display of all sources, including two-way feedback from compatible digital sources.

Stock Code:

TSK 35C SYSTEMLINE ADVANCED COLOUR TOUCH SCREEN

TSK35M Touchscreen

Designed to provide full control and display of all sources, including two-way feedback from compatible digital sources.

Features:

- Real time two-way feedback from any Xiva based SoundServer or compatible DAB/FM Tuner
- Integrated lighting control
- High resolution, high contrast touch screen
- Integrated IR receiver
- Combination of hard key buttons for primary functions and touch screen control
- Integrated Clock and Alarm function
- Plug & play operation with compatible components
- Future proof upgradeable software

Specifications:

- Fits standard UK double gang back box
- Built in RS232 code support for Imerge Xiva based servers (1,2,3 & 4 output); Arcam DT91 FM/DAB Tuner; Lutron Grafik Eye
- Intuitive display and control of six audio and video sources, plus local inputs in up to eight zones.
- Dimensions W x D x H : 138 x 35 x 102mm

Stock Code:

TSK35M SYSTEMLINE ADV TOUCH SCREEN

M-SNTSFSIL Silver double-gang fascia

Double-gang fascia for TSK35M touch screen -
Dimensions W x D x H: 149 x 6 x 118mm

Stock Code:

TSFSIL SYSTEMLINE ADV SILVER DBL FASCIA

M-SNTSFGLS Glass double-gang fascia

Double-gang fascia for TSK35M touch screen -
Dimensions W x D x H: 149 x 6 x 118mm

Stock Code:

TSFGLS SYSTEMLINE ADV GLASS DBL FASCIA

SNB Systemnet Junction box

Junction box merges Systemnet & Modular control data. Sits in line next to active speaker and links both multi-source hub and Systemnet with speaker and touch panel.

Features:

Compact design

Specifications:

Dimensions W x D x H : 145 x 22 x 64mm
Terminated via EIA/TIA 568B connections

Stock Code:

SNB SYSTEMNET ADVANCED JUNCTION BOX



NEW PRODUCT

SYSTEMLINE MUSICSERVER

Store, navigate and play your favourite CDs and Internet Radio by genre, album or artist, all at the touch of a button. The new Systemline MusicServer is an easy to use, one box 'audio library', providing instant access to all your favourite music, categorised and organised just the way you like it. Naturally, for your complete convenience, you can control the MusicServer and enjoy your music at the touch of a button, and from anywhere around your home. Add three separate audio outputs, which allows three users to simultaneously and independently hear their own selections, plus the ability to listen, via its built-in Internet Radio, to stations from all around the world and the Systemline Server becomes the simplest solution to custom install multi-room music delivery.

- Digital input and output via S/PDIF
- Silent running fan system allows listening room placement
- Front mounted USB socket for easy attachment of portable mp3 devices
- Stores 40,000+ songs (average 3.5MB file fully compressed)



Features:

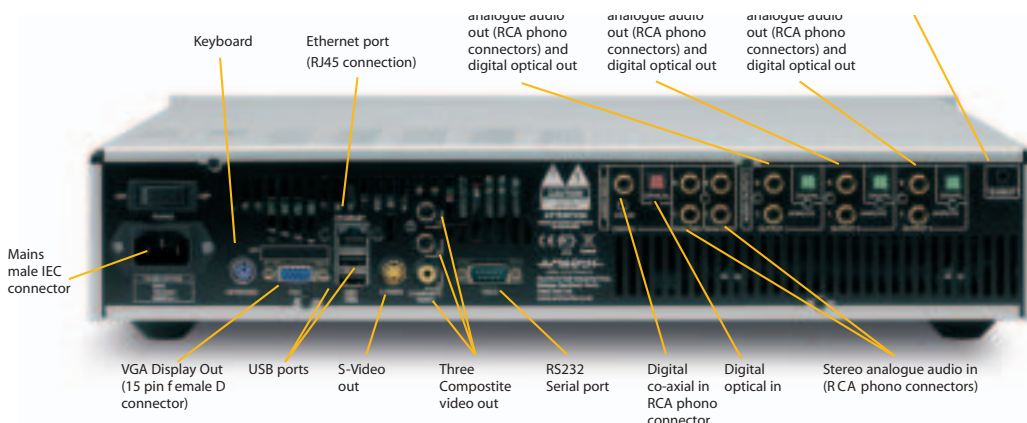
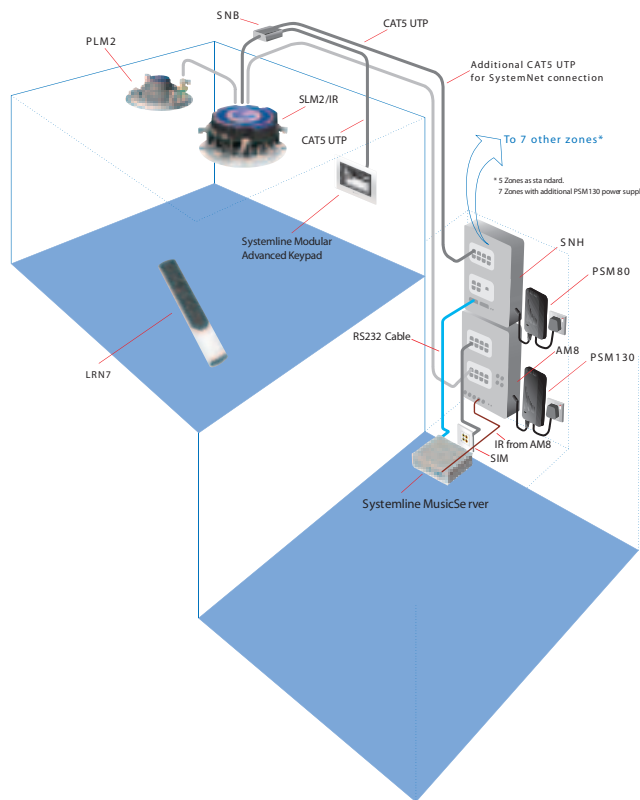
- Feature rich, easy to use, graphic interface via a Systemline Modular Touchscreen, a TV or the front panel display
- Three independent stereo audio outputs, allows simultaneous independent access to any one of three different sources – CD, HDD or Internet Radio
- Three buffered composite video outputs, for full integration with Systemline Modular AM8 Video Hub
- Flexible recording options: Individual tracks or whole albums, from CD to hard drive and from hard drive to CDR
- Store music in a range of formats from uncompressed, 320, 192, 128 and 68kbs
- 160GB HDD storage as standard – that's 40,000+ songs at 68kbs or 300+ albums uncompressed
- Connects directly to broadband via Ethernet
- Plays standard audio CDs (even if "Copy Protected").
- "Enhanced" CD player displays current artist, album and track information (needs Internet connection).
- Record from line in
- Back-up data/music to CD
- Allows on site upgrades
- Extended code set available for full Multi-source Modular integration via LRN7 – gives Enhanced functionality
- Fully compatible with Systemline Modular Advanced
- Party Mode – all three sources output the same program material around the house
- Plays audio files from any other networked PC via Ethernet
- Play/record files from and to any USB compatible portable mass storage device
- Unique three way 'Now Playing' screen
- Background compression for speedy CD ripping

Specifications

- I/O Ports: PS/2 Keyboard Port, VGA Port, RJ-45 LAN Port, 2 USB Ports and IR Input
- Audio Connections: Stereo Analog In RCA x 2, Stereo Analog Out RCA x 3, Coaxial S/PDIF In x 1, Optical S/PDIF In x 1, Optical S/PDIF Out x 3
- Video Connections: Composite Video x 3, S-Video x 1, VGA x 1
- Hard Drive: 160GB
- Frequency Response: 20Hz-20kHz +/- 1dB (PCM)
- S/N Ratio: >98dB (PCM)
- Playback Formats: Uncompressed WAV @ 44.1kHz / 16bit 48kHz / 16bit, Windows Media Audio 9 (.wma) 32, 48, 64, 96, 128, 160, 192 kbs, MPEG-1 Layer 3 (.mp3) 48, 96, 128, 192, 320 kbs, MPEG-4 Audio Layer (.aac) (.m4a), Microsoft Pulse Code Modulation (PCM) (MSADPCM) (IMAADPCM), Microsoft MPEG-1 Layer 1; Microsoft MPEG-1 Layer 2, Waveform Audio (.wav), Sound File (.snd), Unix Audio (.au), Audio Interchange File Format (.aif, .aiff, .aifc)
- Finish: Anodised Silver
- Dimensions (HxWxD): 96 x 438 x 343mm (3.8 x 17.25 x 13.5")
- Weight 9.0kg (19.84lbs)

Stock Code:

S-SMS3/160 SYSTEMLINE MUSICSERVER 160GB



NEW PRODUCT



iPort Free Standing Music Systems For The iPod™

The new Free Standing iPort makes it even easier for the entire family to use the Apple iPod™ to enjoy their digital music and digital photo collections throughout the entire home. Unlike the in-wall iPort these are completely free standing so can be placed anywhere. iPort provides quick docking and access to iPod mini, iPod nano (adapter included), iPod, iPod with color display, iPod with video. The DC power supply (also included) charges the iPod while it is docked in the iPort.

FS-1: Free standing (FS) docking station for the iPod®. Allows streaming or syncing at the touch of a button. Charges the iPod when docked. Universal cradle works with all iPods with dock connectors, no adapters necessary. Passes unbalanced audio and video via a minibreak-out-box (mini-BOB) that is connected to the FS unit by a single custom cable for superior cable management. Connects to an amp or receiver via RCA type audio cables and to a display device via composite video cable or S-Video cable. Allows connection to a computer for syncing content from the iTunes™ library using the provided custom cable. Audio and video cables not included.

FS-2: Includes all the features of the FS-1 model plus adds IR functionality with built-in IR receiver on the dock. Also includes a built-in pre-amp with volume control. Choose fixed or variable output. Remote control not included.

FS-3: Includes all the features of the FS-2 model and adds balanced audio and IR pass-through via the included balanced audio wall plates, plus a separate full-size break-out box (BOB) that provides an upgrade path including two way communication. Includes a sender wall plate and a receiver wall plate. Rated for placement up to 500 feet between audio sender and receiver wall plates.



FS-4: Includes all the features of the FS-3 model and adds the ability of two-way communication from a control device. Includes RJ-11 to DB-9 female adapter cable. The control device can be connected directly to the BOB or into the audio receiver wall plate. This enables control of the iPod and for the display of the metadata on the control device. The metadata from the iPod includes Playlists, Track, Artist and Album Name, etc. The iPod does not supply album art. Two-way mode disables the click wheel on the iPod.

FS-5: Includes all the features of the FS-4 model and adds balanced video capability via the included balanced video wall plates. Includes a sender wall plate and a receiver wall plate. Rated for placement up to 250 feet between the sender and receiver wall plates.

ACCESSORIES AND KITS (COMING SOON)

Full Size Break-Out Box: External Break-Out-Box (BOB) upgrades from the mini-BOB which allows connection to the audio and video sender/receiver wall plate pairs. Provides an upgrade path including two way communication by using plug-in board modules.

FS Balanced Audio Kit: For use with FS-1 and -2 models. Includes matching audio sender and receiver wall plates. Allows transmission of balanced audio up to 500 feet.

FS Balanced Video Kit: For use with FS-1, -2, -3 and -4 models. Includes matching video sender and receiver wall plates. Allows transmission of balanced video up to 250 feet.

FS RS232 Module Kit: Includes RS-232 module and RJ-11 to DB-9 female adapter cable for use with FS-2 (requires Full Size Break-out-box; #70033) and FS -3. This enables control of the iPod and for display of the metadata on the control device. The metadata from the iPod includes Playlists, Track, Artist and Album Name etc. (The iPod currently does not supply album art.)

Stock Code:

FS-1WG	FS1 SONANCE I-PORT MUSIC SYSTEM WHITE
FS-2WG	FS2 SONANCE I-PORT MUSIC SYSTEM WHITE
FS-3WG	FS3 SONANCE I-PORT MUSIC SYSTEM WHITE
FS-4WG	FS4 SONANCE I-PORT MUSIC SYSTEM WHITE
FS-5WG	FS5 SONANCE I-PORT MUSIC SYSTEM WHITE
FS-1BG	FS1 SONANCE I-PORT MUSIC SYSTEM BLACK
FS-2BG	FS2 SONANCE I-PORT MUSIC SYSTEM BLACK
FS-3BG	FS3 SONANCE I-PORT MUSIC SYSTEM BLACK
FS-4BG	FS4 SONANCE I-PORT MUSIC SYSTEM BLACK
FS-5BG	FS5 SONANCE I-PORT MUSIC SYSTEM BLACK

IR codes available with Systemline ARC-7 and NEVO SL



iPort In-Wall Docking Station For The iPod™

The iPort makes it easy for the entire family to use the Apple iPod™ to enjoy their digital music and digital photo collections throughout the entire home. iPort provides quick docking and access to the iPod photo, iPod mini and 4th Generation iPod with Click Wheel (40GB, 20GB only). The included Wallplate allows the iPort to connect to and play through practically any local or whole-home audio system. The DC power supply (also included) charges the iPod while it is docked in the iPort.

FEATURES:

- Polished ABS construction compliments iPod styling
- Designed for easy docking/undocking of iPod
- Connects to supplied wallplate with Cat-5 cable via 8-pin connectors
- Built-in IR emitters - can be used with optional IR receivers for extensive control of iPod (Play, Pause, Previous Track/Fast-Rewind, Next Track/Fast-Forward, Mute, Next/Previous Chapter or Album, Next/Previous Playlist, Power Off/On, Repeat, Shuffle, Stop, Headphone Volume Up/Down)
- Fixed 200mA audio output: Balanced (for up to 500-foot runs), or Unbalanced (for local source installations)
- Video output allows photos and slide shows stored in iPod photo players to be displayed in TVs and monitors anywhere in a home
- 15-Volt Regulated DC power supply connects to iPort wallplate and charges iPod

SPECIFICATIONS:

- Frequency Response: 20Hz - 20kHz (±0.25dB) @ 500 ft. CAT-5
- THD+Noise: < 0.015%, 20Hz - 20kHz @ 500 ft. CAT-5
- Signal to Noise: > 90dB (A wtd.) @ 500 ft. CAT-5
- Maximum signal input: 1.5V RMS
- Power supply: 15V DC, 500mA, regulated
- Dimensions (W x H x D): 127mm x 173mm x 83mm
- Cutout Dimensions (W x H): 4-1/8" x 6" (105mm x 152mm)

The perfect partner for:



IW-1

IW-1: Charges the iPod when docked. Universal cradle works with all iPod hard drive based music players. No adapters necessary. Unbalanced audio and video output via RJ45 connectors. Unbalanced audio wall plate included. Unbalanced video wall plate kit optional. Ideal for a local connection to audio amplifiers and video display devices. Power supply included.



IW-4

IW-2: Includes all the features of the IW-1 and adds IR remote functionality with a built in IR receiver in the front of the in-wall dock. Control the iPod from across the room. Remote control not included. Works with iPod remote controls as well as any learning or universal IR remote control. Starting with the IW-2, an upgrade path is available to add features. May be upgraded to balanced audio or video, as well as two-way RS-232 communication via optional kits.



Balanced Audio Kit

IW-3: Includes all the features of the IW-2 with the addition of a factory mounted balanced audio module and the substitution of a balanced audio wall plate with an IR receiver. Rated for placement up to 150 metres away from the amp or receiver.



Balanced Video Kit

IW-4 and IW-5: also exist which allows all the features of the IW-3 and upgrades to RS232 control and feedback (IW-4), and a balanced video module (IW-5).

The following upgrade 'boards' (fit all IW-2, IW-3 and IW-4) are available by special order: Unbalanced Video Kit, Balanced Audio Kit, Balanced Video Kit and RS232 Module Kit

Stock Code:

- IW-1** IW1 SONANCE I-PORT MUSIC SYSTEM
- IW-2** IW2 SONANCE I-PORT MUSIC SYSTEM
- IW-3** IW3 SONANCE I-PORT MUSIC SYSTEM
- IW-4** IW4 SONANCE I-PORT MUSIC SYSTEM
- IW-5** IW5 SONANCE I-PORT MUSIC SYSTEM
- IW-UVK** UNBALANCED VIDEO KIT
- IW-BAK** BALANCED AUDIO KIT
- IW-BVK** BALANCED VIDEO KIT
- IW-RS232** RS-232 MODULE
- IPBBOX** I-PORT IW BACK BOX
- IW-BF** BLACK FACE PLATE

Firmware updates available for continuous compatibility

IR codes available with Systemline ARC-7 and NEVO SL

