



# YDS-11

*Universal Dock for iPod*  
*Le Universal Dock pour l' iPod*  
iPod用Universal Dock

OWNER'S MANUAL  
MODE D'EMPLOI  
BEDIENUNGSANLEITUNG  
BRUKSANVISNING  
MANUALE DI ISTRUZIONI  
MANUAL DE INSTRUCCIONES  
GEBRUIKSAANWIJZING  
ИНСТРУКЦИЯ ПО ЭКСПЛУАТАЦИИ  
使用说明书  
사용 설명서  
取扱説明書

English

Français

Deutsch

Svenska

Italiano

Español

Nederlands

Русский

中文

한국어

日本語



## FCC INFORMATION (for US customers only)

### 1. IMPORTANT NOTICE : DO NOT MODIFY THIS UNIT!

This product, when installed as indicated in the instructions contained in this manual, meets FCC requirements. Modifications not expressly approved by Yamaha may void your authority, granted by the FCC, to use the product.

**2. IMPORTANT :** When connecting this product to accessories and/or another product use only high quality shielded cables. Cables supplied with this product MUST be used. Follow all installation instructions. Failure to follow instructions could void your FCC authorization to use this product in the USA.

**3. NOTE :** This product has been tested and found to comply with the requirements listed in FCC Regulations, Part 15 for Class "B" digital devices. Compliance with these requirements provides a reasonable level of assurance that your use of this product in a residential environment will not result in harmful interference with other electronic devices.

This equipment generates/uses radio frequencies and, if not installed and used according to the instructions found in the users manual, may cause interference harmful to the operation of other electronic devices.

Compliance with FCC regulations does not guarantee that interference will not occur in all installations. If this product is found to be the source of interference, which can be determined by turning the unit "OFF" and "ON", please try to eliminate the problem by using one of the following measures:

Relocate either this product or the device that is being affected by the interference.

Utilize power outlets that are on different branch (circuit breaker or fuse) circuits or install AC line filter/s.

In the case of radio or TV interference, relocate/reorient the antenna. If the antenna lead-in is 300 ohm ribbon lead, change the lead-in to coaxial type cable.

If these corrective measures do not produce satisfactory results, please contact the local retailer authorized to distribute this type of product. If you can not locate the appropriate retailer, please contact Yamaha Electronics Corp., U.S.A. 6660 Orangethorpe Ave, Buena Park, CA 90620.

The above statements apply ONLY to those products distributed by Yamaha Corporation of America or its subsidiaries.

## COMPLIANCE INFORMATION STATEMENT

This device complies with Part 15 of the FCC Rules. Operation is subject to the following conditions:

- 1) This device may not cause harmful interface, and
- 2) This device must accept any interference received including interference that may cause undesired operation of this device.

See user manual instructions if interference to radio reception is suspected.

## ■ Precautions

**Read this before using this unit.**

- To assure the finest performance, please read this manual carefully. Keep it in a safe place for future reference.
- Install this unit in a cool, dry, clean place away from windows, heat sources, and sources of excessive vibration, dust, moisture and cold. Avoid sources of humming (transformers, motors, etc.). To prevent fire or electrical shock, do not expose this unit to rain or water.
- To prevent the enclosure from warping or discoloring, do not place this unit where it will be exposed to direct sunlight or excessive humidity.
- Do not place this unit where foreign objects such as water drips may fall. It may cause a fire, or damage to this unit.
- Do not attempt to clean this unit with chemical solvents as this may damage the finish. Use a clean, dry cloth.
- Do not attempt to modify or fix this unit. Contact qualified Yamaha service personnel when any service is needed. The cabinet should never be opened for any reasons.

**Secure placement or installation is the owner's responsibility.**

**Yamaha shall not be liable for any accident caused by improper placement or installation of this unit.**

## ■ Introduction

This product enables you to connect an iPod with Yamaha dock-compatible device and play the files recorded on the device. The method of operating the iPod using this product as well as the usable functions depends on the dock-compatible device or iPod you are using. For details, refer to the operating instructions of the dock-compatible device or iPod. (Dock-compatible device: Device to which the YDS-11 is connected.)

The types of iPods compatible with this product are listed below. (As of March 2008)

- iPod (Click Wheel, including iPod classic)
- iPod nano
- iPod mini
- iPod touch

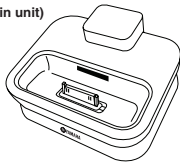
### iPod™

“iPod” is a trademark of Apple Inc., registered in the U.S. and other countries.

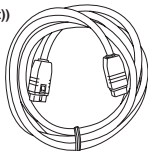
## ■ Checking the package contents

Check that the following items are included in the package. (iPod is not included.)

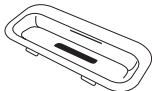
YDS-11 (Main unit)



Dock cable (2 m (6.5 ft))



iPod dock adapters (A, B, C)



A iPod with color display (20 GB or 30 GB) or U2 Special Edition



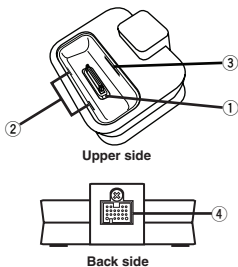
B iPod with color display (40 GB or 60 GB) or iPod (40 GB)



C iPod mini (4 GB or 6 GB)

- \* The iPod Dock adapter is an adapter for use with iPods with which no adapter is included.
- \* When using an iPod that comes with an adapter, use the adapter included with the iPod.
- \* The mark (A), (B), or (C) is shown on the back of each iPod dock adapter.

## ■ Controls and functions

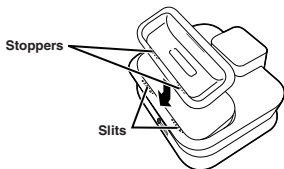


- ① **iPod connector terminal**  
Connects your iPod.
- ② **Slits**  
Hold an iPod dock adapter.
- ③ **Adapter holder**  
Holds an iPod dock adapter.
- ④ **Dock cable terminal**  
Connects the supplied dock cable.

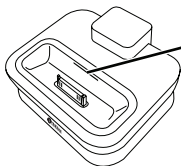
## ■ Inserting an iPod dock adapter

Insert the iPod dock adapter supplied with your iPod into the slot of the main unit. Depending on the type of your iPod, you may need to insert one of the iPod dock adapters supplied with this unit. See page 1 for details about the iPod dock adapter.

1. **Insert the stoppers of the iPod dock adapter into the slits on the slot of this unit.**



2. **Insert the iPod dock adapter until it snaps into the slot of this unit.**

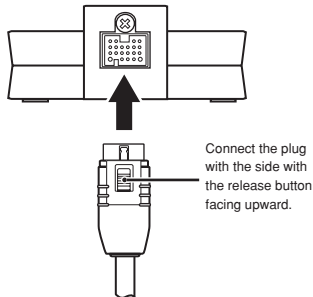


**Slit**  
When you remove the iPod dock adapter from this unit, insert one of your finger nails into the slit on the iPod dock adapter and pull it up.

## ■ Connecting the dock cable

---

1. Connect one of the plugs of the dock cable to the dock cable terminal of this unit firmly.

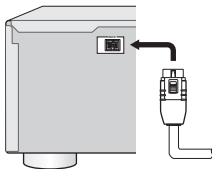


2. Make sure the power of the universal dock compatible component is turned off.

### **Note**

Connecting the dock connection cable while the dock-compatible device's power is on could result in damage.

3. Connect the other plug of the dock cable to the DOCK terminal of the universal dock compatible component.



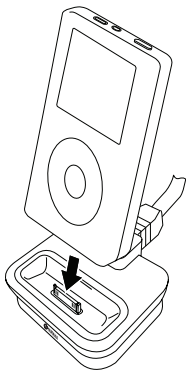
### **Note**

Be sure to connect the plugs of the dock cable firmly to both the dock cable terminal of this unit and the DOCK terminal of the universal dock compatible component. When the connection is loose, this unit may output some unwanted noise.

## ■ Connecting your iPod

---

Insert the dock connector port of your iPod into the iPod connector terminal of this unit firmly.

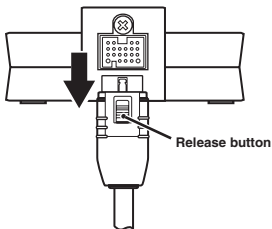


### Notes

- **Make sure that the output level of the universal dock compatible component is set to minimum.**
- To protect the dock connector from damage, do not twist or sway back and forth your iPod when inserting or taking it off from this unit, and be careful not to knock over this unit when your iPod is inserted.
- Use this unit with the iPod dock adapter (supplied with your iPod or with this unit) appropriate for your iPod. If you use this unit without using an appropriate iPod dock adapter, loose connection may result.
- Do not take off your iPod from this unit when you play back the music, photo, or movie stored on your iPod with the universal dock compatible component.
- Connect your iPod without any other iPod accessories (such as headphones, a wired remote control, an FM transmitter etc.) connected.
- It is recommended that you update your iPod software before using it with this unit. The updater for the iPod software is available at the Apple website.

## ■ Disconnecting the dock cable

1. Make sure the power of the universal dock compatible component is turned off.
2. Press and hold the release button and then pull off the plug of the dock cable.



### Note

Disconnecting the dock connection cable while the dock-compatible device's power is on could result in damage.

## ■ Troubleshooting

Refer to the items listed below when this unit does not function properly.

- Connect your iPod to this unit firmly.
- Connect the dock cable to the universal dock compatible component firmly.
- Connect the dock cable to this unit firmly.
- Update the software of your iPod to the latest version.

If the instructions above do not help, refer to the instructions of your iPod or universal dock compatible component.

## ■ Specifications

Dimensions (W x H x D) .....	80 x 33 x 70 mm (3.1 x 1.3 x 2.8 in)
Weight .....	135 g (4.8 oz)

\* Specifications are subject to change without notice.





©2008 YAMAHA CORPORATION All rights reserved.

**YAMAHA ELECTRONICS CORPORATION, USA** 6660 ORANGETHORPE AVE., BUENA PARK, CALIF. 90620, U.S.A.  
**YAMAHA CANADA MUSIC LTD.** 135 MILNER AVE., SCARBOROUGH, ONTARIO M1S 3R1, CANADA  
**YAMAHA ELECTRONIK EUROPA G.m.b.H.** SIEMENSSTR. 22-34, 25462 RELLINGEN BEI HAMBURG, GERMANY  
**YAMAHA ELECTRONIQUE FRANCE S.A.** RUE AMBROISE CROIZAT BP70 CROISSY-BEAUBOURG 77312 MARNE-LA-VALLÉE CEDEX02, FRANCE  
**YAMAHA ELECTRONICS (UK) LTD.** YAMAHA HOUSE, 200 RICKMANSWORTH ROAD WATFORD, HERTS WD18 7GQ, ENGLAND  
**YAMAHA SCANDINAVIA A.B. J A WETTERGRENS** GATA 1, BOX 30053, 400 43 VÄSTRA FRÖLUNDA, SWEDEN  
**YAMAHA MUSIC AUSTRALIA PTY. LTD.** LEVEL 1, 99 QUEENSBRIDGE STREET, SOUTHBANK, VIC 3006, AUSTRALIA  
**야마하 뮤직 코리아(주)** 서울특별시 강남구 삼성동 158-9 동성빌딩 8F/9F  
**ヤマハ株式会社** 〒430-8650 静岡県浜松市中区中沢町10-1

**YAMAHA CORPORATION**

Printed in China ◀ WP03260