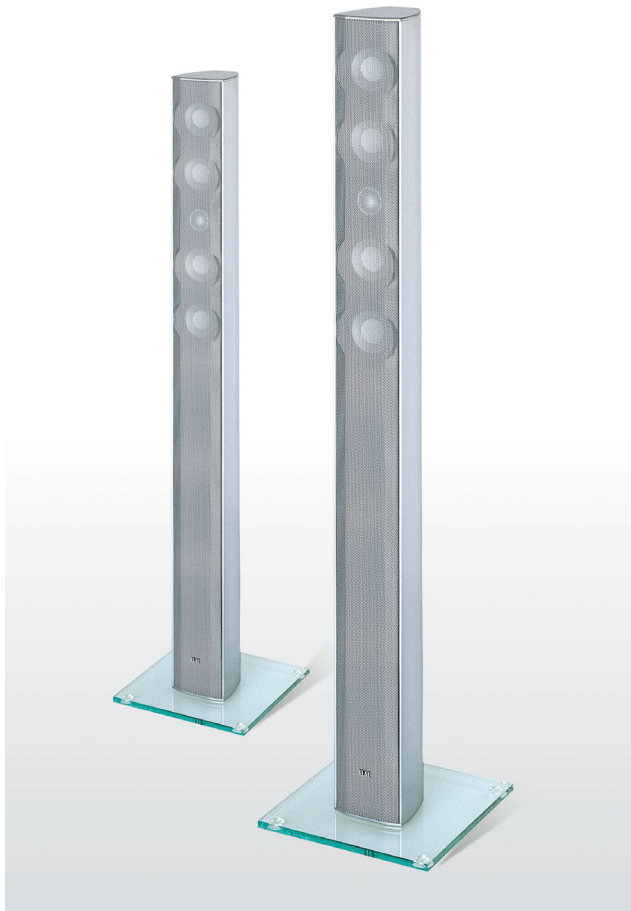


## CINEMA PIPE: Graceful design – powerful soundstage



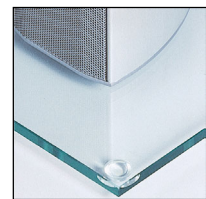
Acoustical and optical pleasure: This slender floor-standing speaker equipped with a delicate glass plinth fascinates by its full and rich soundstage. In combination with the CINEMA 2 SAT satellites, the CINEMA XL CENTER and an ELAC subwoofer e.g. SUB 303 ESP, the CINEMA PIPE is the ideal main speaker in a home theatre setup.

This delicate beauty in an extruded brushed aluminium cabinet is also suitable for high-quality stereo reproduction.

In combination with a subwoofer, this speaker is part of a highly efficient system suitable for high levels or larger rooms.

### Features and Benefits

- 25mm silk dome tweeter with ferrofluid cooling driven by a neodymium magnet system to provide good sound and reliability
- inline arrangement of 4 concave-shaped midrange woofers including individual filtering for controlled radiation
- maximum SPL above 100 dB possible
- 80mm woofer with



long-life rubber surround and cellulose cone damped on the back for neutral performance; high efficiency due to fourfold use

- will work well with less powerful amplifiers due to amplifier-friendly impedance of 6 Ohms
- trouble free use is guaranteed by overload-protection
- elegant appearance due to rugged extruded aluminium cabinet with hairline finish and glass plinth
- input terminal providing inclined sockets for better access, suitable for large cable diameters (4 qmm)
- shielded magnet systems for trouble free use near TV sets

*Finishes: silver brushed aluminium*

### Specifications CINEMA PIPE

Dimensions HxWxD	900 x 88 x 102 mm	Crossover Frequency	900/3800 Hz
Gross Volume	6 l	Nominal/Peak Power Handling	80/100 W
Weight	5 kg (without plinth) 6 kg (incl. plinth)	Frequency Range	80...21,000 Hz
Type	2 ½-way, closed, integr. high-pass filter	Sensitivity	89dB/2.83V/m
Midrange/Woofers	4 x 80 mm cone	Nominal Impedance	6 Ohms
Tweeter	1 x 25 mm dome	Minimum Impedance	4.8 Ohms at 400 Hz
Suitable for amplifiers from...	4-8 Ohms	Rec. Amplifier Power at Nom. Impedance	20 –150 W/ channel

featuring CINEMA PIPE



**ELAC**