

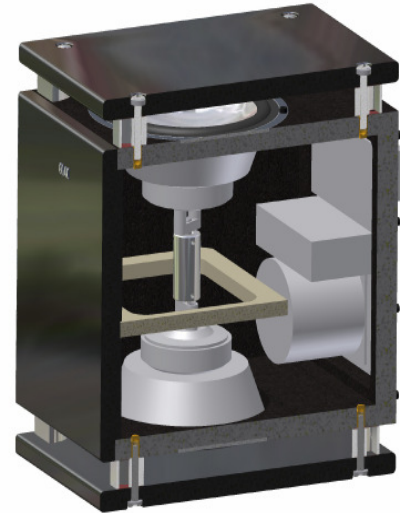
## Universal, flexible, powerful bass: SUB 2040 ESP



The SUB 2040 ESP sets new standards in its class. Driven by a powerful 300W-Class D amplifier, the two woofers in push-push/pull-pull array generate an enormously expressive and crisp bass. And this practically without cabinet vibrations that would impair the quality of sound reproduction. The facing arrangement of the chassis means that the mechanical impulses that – in a conventional design – are transmitted to the cabinet are almost completely eliminated. In addition, the two drivers are coupled by a massive connecting shaft.

The room-tuning circuit ensures optimal adjustment of the subwoofer to the ambient spatial conditions.

This system is



universally connectible: Up to three (!) loudspeaker inputs can be used in parallel (e.g. left, right and centre), while simultaneously connecting the surround receiver's LFE input. As a result – virtually independent of the surround receiver's bass management settings – optimum bass reproduction is assured, whether in stereo or surround mode.

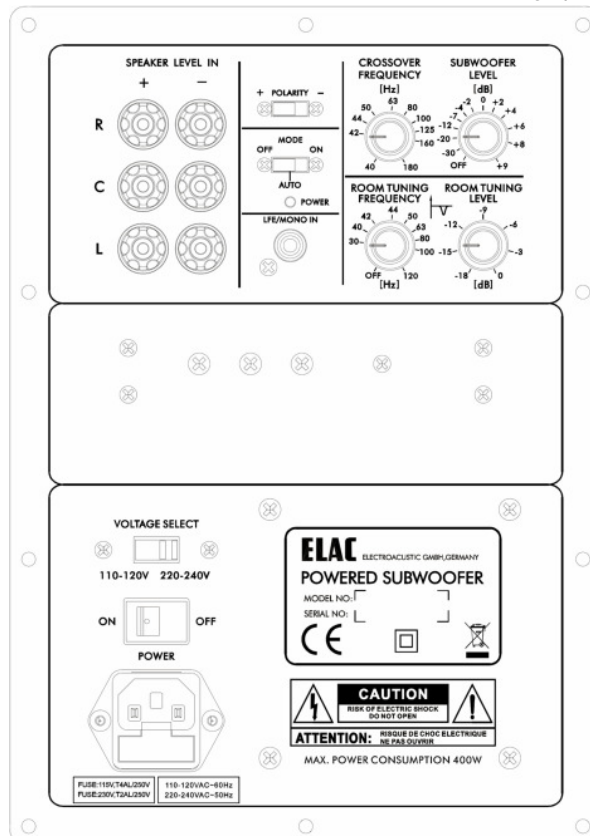
The crossover frequency of the main speakers is infinitely adjustable, thereby maximising flexibility. To compensate for phase differences between the satellite speakers and the subwoofer, which can be the result of differing spatial arrangements, the subwoofer is equipped with a phase switch.

### Driver equipment:

2x 200mm AS woofers

### Electronic features:

- Class-D digital amplifier with 300W peak power, controlled by 4<sup>th</sup> order filters with ESP, assuring complete harmonisation of drive units, power amplifier and cabinet.
- Room-tuning circuit (adjustable notch filter) for specific elimination of room resonances.
- Adjustable volume and crossover frequency.
- Standby-mode (indicated by red LED on the back) with power consumption less than 5 W.
- Polarity switching 0° / 180°.
- Automatic on/off switch with approx. 15 min. switch-off delay.



Product Information SUB 2040 ESP

FINEST GERMAN ENGINEERING  
**ELAC**

**Mechanical features:**

## Connectors:

- Input socket for mains power
- Cinch socket, input for LFE signal (mono)
- High-quality gold-plated screw terminals for loudspeaker input level (L / C / R)

## Switches:

- Mains switch
- Voltage selector switch for 110-120V or 220-240V
- Polarity switch 0° / 180°
- Operating mode selector ON / AUTO / OFF

## Controllers:

- Volume adjustment
- Crossover frequency
- Room tuning frequency
- Rom tuning attenuation

**Finishes:** Titanium, Black (top plate, base plate and baffle board: high gloss), matt white lacquer

**Technical specifications:**

Dimensions HxWxD	415 x 257 x 358 (383) [mm] ( )=with terminals	Woofers	2 * TT 200mm AS
Gross Volume	37.7 l	Upper Cut Off Freq., adjustable	40 ... 180 Hz
Weight	17.7 kg net	Frequency Range	25 ... 240 Hz
Mains Fuse / Mains Voltage	2.5 A T at 220...240V~ / 50...60Hz 5.0 A T at 110...120V~ / 50...60Hz	Amplifier Output	250 W / 300 W (sine/pulse)
Power Consumption Stand by	max. 5 W	S/N R	> 100 dB (A-weighted) relative to full output
Power Consumption Full output	380 W	Input Sensitivity	Line: 1x 200 mV , LS: 3 x 2.5V (loudspeaker)
Type	1-way active, 2 woofers in push-push / pull-pull array	Input resistance	Line: 35 kOhm LS: 220 Ohm floating